

**UDAY**<sup>TM</sup>  
INDUSTRIES

**12x18**  
**FISH & FLOWER**  
**COLLECTION**



**2023**  
**Collection**



## **About Us...**

UDAY INDUSTRIES is one of the best-known glazed tiles manufacturing company in the field of ceramics. The company is proud of its high-tech production system, designed by its most sophisticated research department, to produced wide range of high quality Wall tiles.

The company carries the vision to cater world class glazed tiles. It believes in producing superior quality ceramic glazed tiles with sharp vision on market.

It takes a lot of skill to design and manufacture in a competitive market but the company has track record of many successful years as a leading ceramic company. The company has well established dealer network throughout the country and it has marked it presence in export market of various countries.





4074\_L



4074\_HL\_1



4074\_HL\_1



4074\_D



G  
L  
O  
S  
S  
Y

G  
L  
O  
S  
S  
Y



4074-L



4074\_HL\_3



4074\_HL\_4



4074\_D





4083\_L



4083\_HL\_1



4083\_HL\_2



4083\_D



G  
L  
O  
S  
S  
Y

G  
L  
O  
S  
S  
Y



4083-L



4083-HL\_3(Random)



4083-HL\_4



4083-L



G  
L  
O  
S  
S  
Y



4084\_L\_1



4084\_HL\_1



4084\_HL\_2

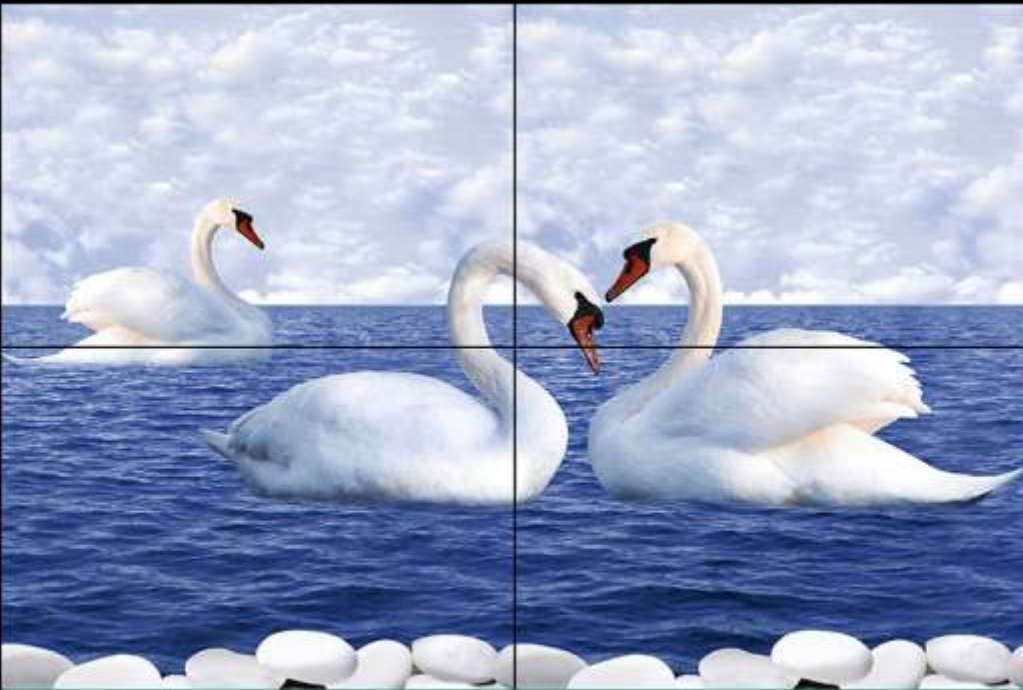


4084\_L





4084\_L\_1



4084\_Poster\_3(4 pcs.)



4084\_L



G  
L  
O  
S  
S  
Y





4084\_L



4084\_Poster\_1 (4 pcs.)



4084\_L



G  
L  
O  
S  
S  
Y

G  
L  
O  
S  
S  
Y



4084\_Poster\_2 (4 pcs.)



4084\_L



4115\_L



4115\_HL\_2



4115\_HL\_1



4115\_D



G  
L  
O  
S  
S  
Y



4115\_L



4115\_Poster\_1 (4 pcs.)



4115\_D



G  
L  
O  
S  
S  
Y

G  
L  
O  
S  
S  
Y



4120\_L



4120\_HL\_A



4120\_HL\_B



4120\_D





4143\_L



4143\_HL\_1



4143\_HL\_2



4143\_D



G  
L  
O  
S  
S  
Y



4151\_L



4151\_HL\_1



4151\_HL\_2

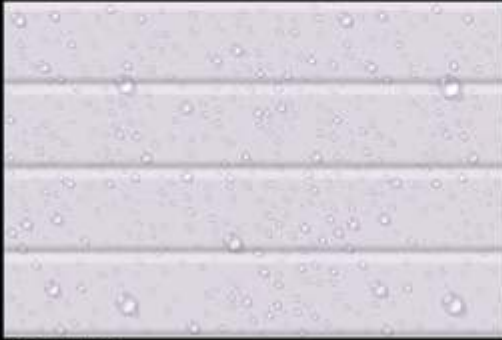


4151\_D

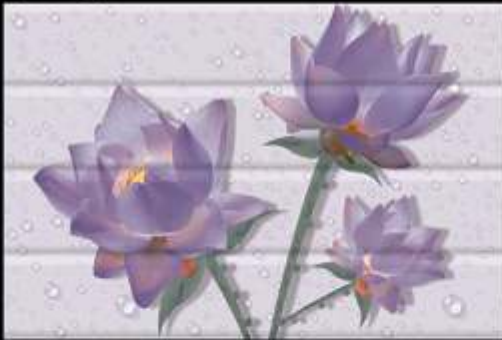
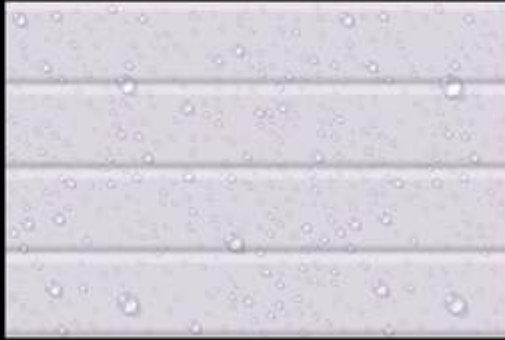


G  
L  
O  
S  
S  
Y

G  
L  
O  
S  
S  
Y



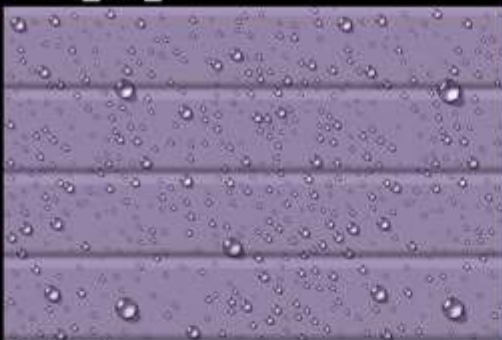
4152\_L



4152\_HL\_2



4152\_HL\_1

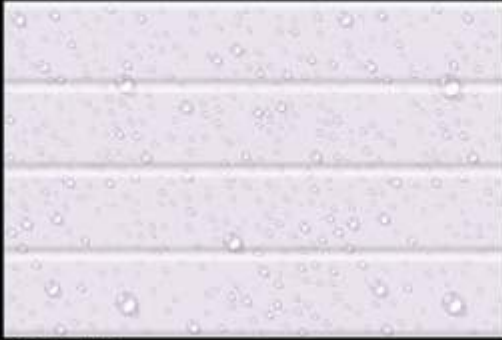


4152\_D

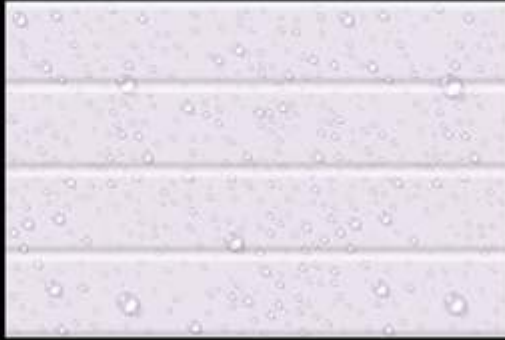




G  
L  
O  
S  
S  
Y



4152\_L



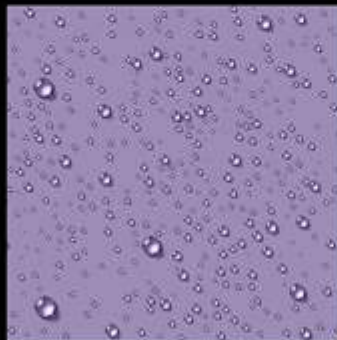
4152\_HL\_A



4152\_HL\_B



4152\_D



G  
L  
O  
S  
S  
Y



4153\_L



4153\_L



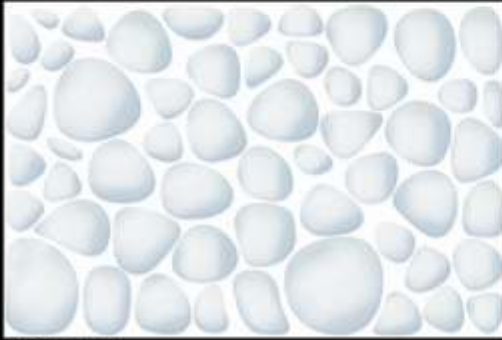
4153\_HL\_1



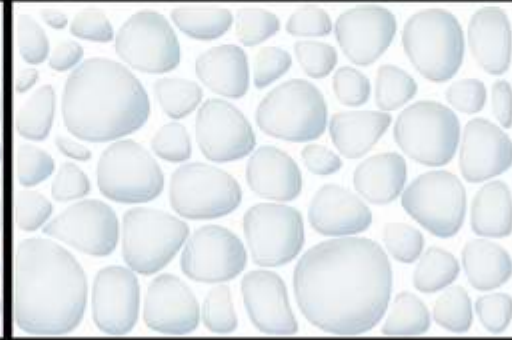
4153\_D



G  
L  
O  
S  
S  
Y



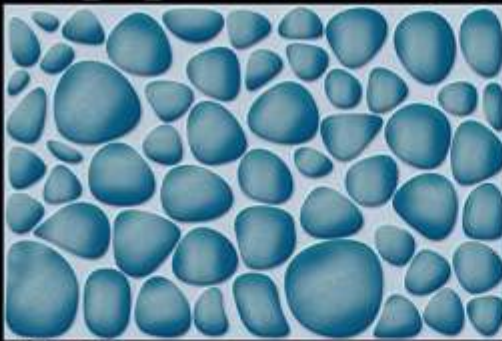
4154\_L



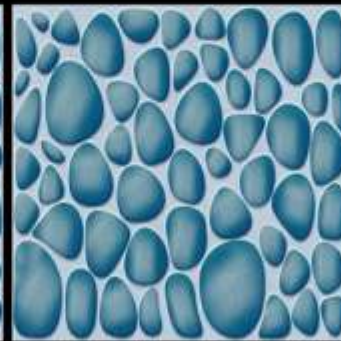
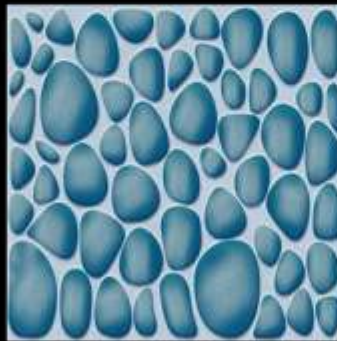
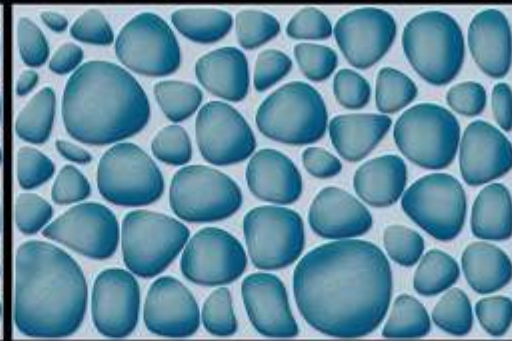
4154\_HL\_1



4154\_HL\_1



4154\_D



G  
L  
O  
S  
S  
Y



4156\_L



4156\_HL\_1



4156\_HL\_1



4156\_D



G  
L  
O  
S  
S  
Y



4157\_L



4157\_HL\_1



4157\_HL\_2



4157\_D



G  
L  
O  
S  
S  
Y



4160\_L (4151\_L)



4160\_HL\_1



4160\_HL\_3



4160\_HL\_2

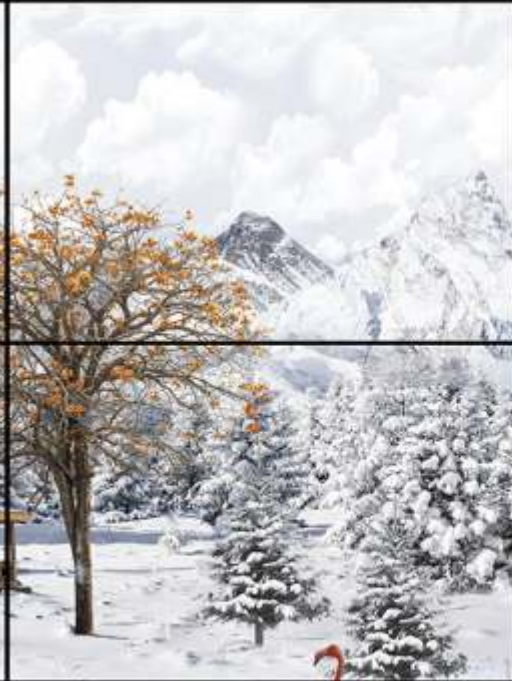


4160\_D





4160\_L (4151\_L)



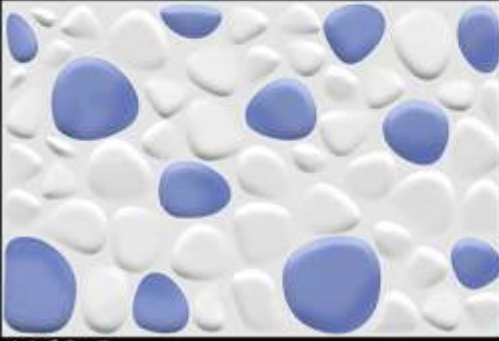
4160\_Poster\_1 (6 pcs.)



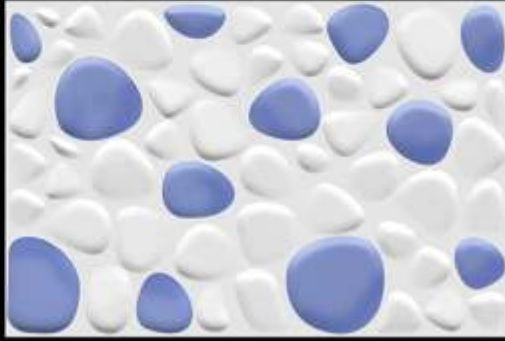
4160\_D

G  
L  
O  
S  
S  
Y

G  
L  
O  
S  
S  
Y



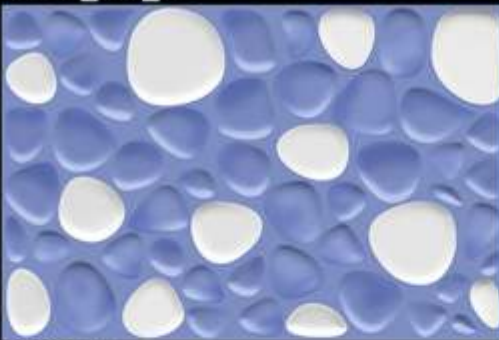
4163\_L



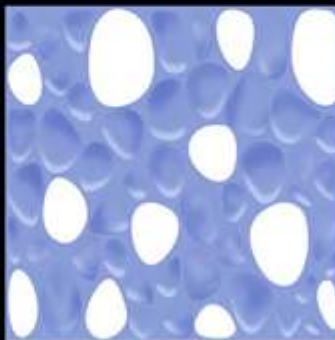
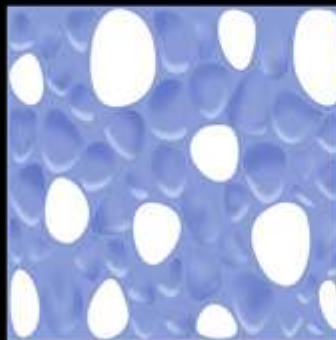
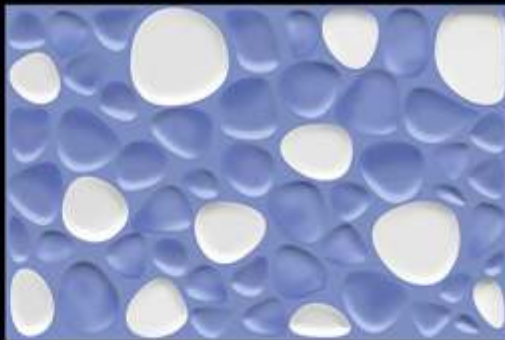
4163\_HL\_1



4163\_HL\_1



4163\_D





G  
L  
O  
S  
S  
Y



4083\_L



4185\_HL\_1



4185\_HL\_2



4185\_HL\_3



4185\_D



G  
L  
O  
S  
S  
Y



4083\_L



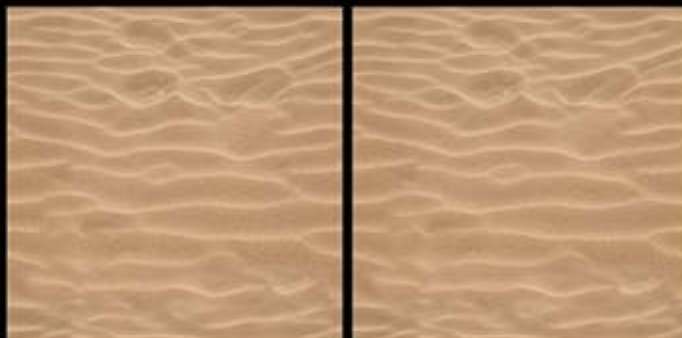
4185\_HL\_A



4185\_HL\_B



4185\_D





4187\_HL\_1



4187\_L\_1



4187\_HL\_2



4187\_HL\_3



4187\_L



G  
L  
O  
S  
S  
Y

G  
L  
O  
S  
S  
Y



4188\_L (4083\_L)



4188\_HL\_1



4188\_HL\_2



4188\_D



G  
L  
O  
S  
S  
Y



4197\_L(4083\_L)



4197\_HL\_A(Random)



4197\_HL\_B(Random)



4197\_D



G  
L  
O  
S  
S  
Y



4205\_L



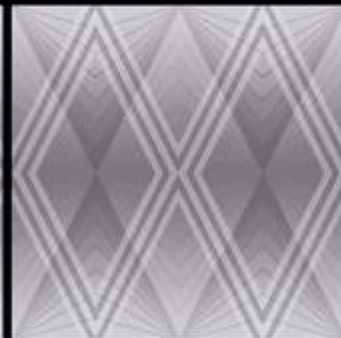
4205\_HL\_A



4205\_HL\_B



4205\_D



G  
L  
O  
S  
S  
Y



4220\_L



4220\_HL\_1



4220\_HL\_2



4220\_D



G  
L  
O  
S  
S  
Y



4220\_L



4220\_HL\_A



4220\_HL\_B



4220\_D





G  
L  
O  
S  
S  
Y



4221\_L



4221\_HL\_1



4221\_HL\_2



4221\_D





4224\_L



4224\_Poster\_1 (6 pcs.)



4224\_D



G  
L  
O  
S  
S  
Y

G  
L  
O  
S  
S  
Y



4224\_L



4224\_HL\_4



4224\_HL\_5



4224\_HL\_6



4224\_D



G  
L  
O  
S  
S  
Y



4224\_L



4224\_HL\_7



4224\_HL\_8



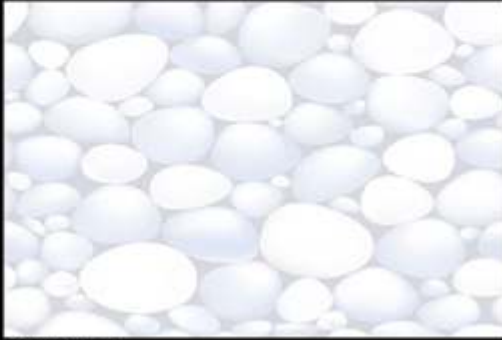
4224\_HL\_9



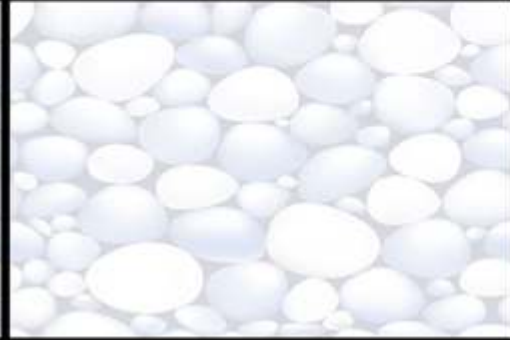
4224\_D



G  
L  
O  
S  
S  
Y



4239\_L



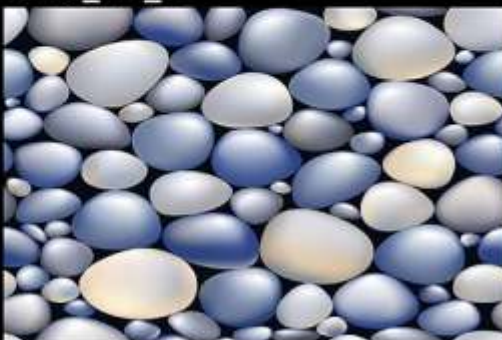
4239\_HL\_1



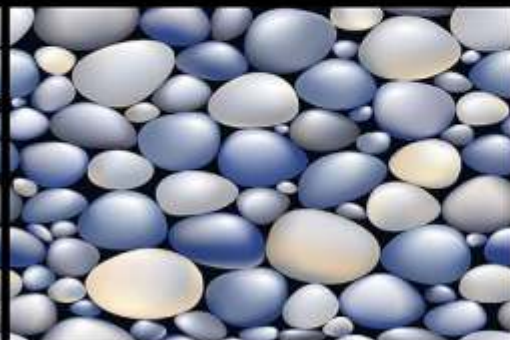
4239\_HL\_2



4239\_HL\_3



4239\_D



G  
L  
O  
S  
S  
Y



4083\_L



4241\_HL\_1



4241\_HL\_2



4241\_D



G  
L  
O  
S  
S  
Y



4257\_L



4257\_HL\_1



4257\_HL\_1



4257\_D



G  
L  
O  
S  
S  
Y



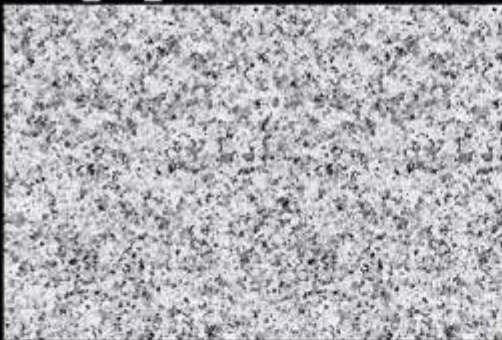
4263\_L



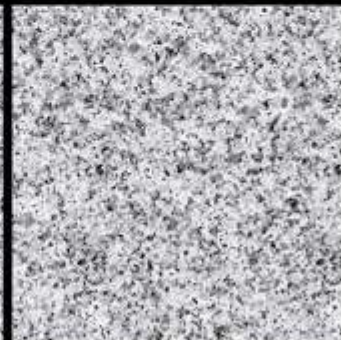
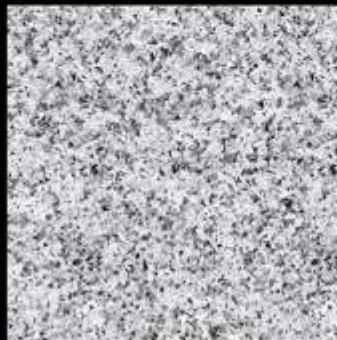
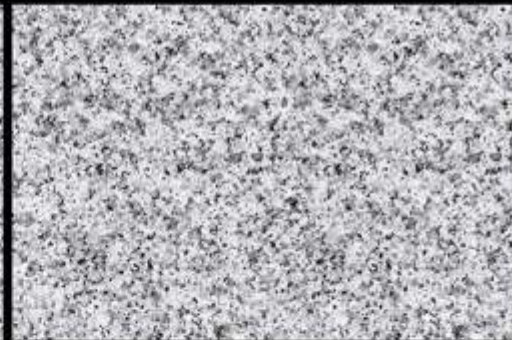
4263\_HL\_A



4263\_HL\_B



4263\_D





G  
L  
O  
S  
S  
Y



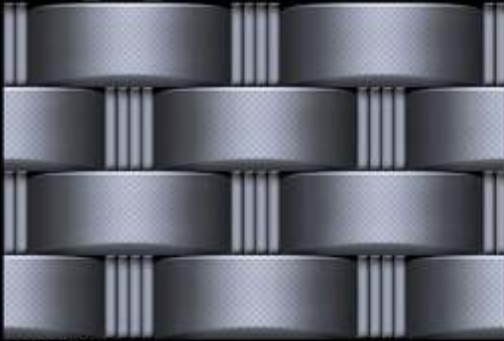
4268\_L



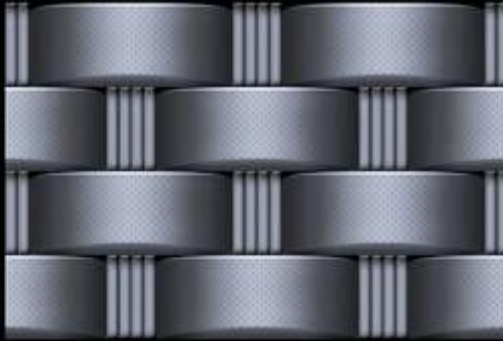
4268\_HL\_A



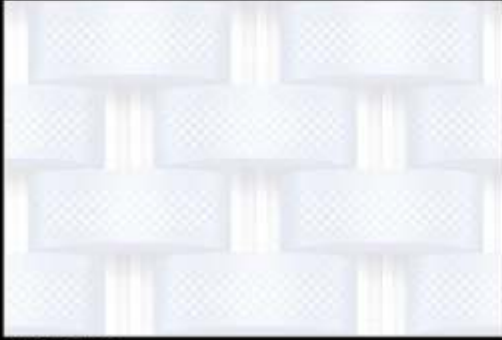
4268\_HL\_B



4268\_D



G  
L  
O  
S  
S  
Y



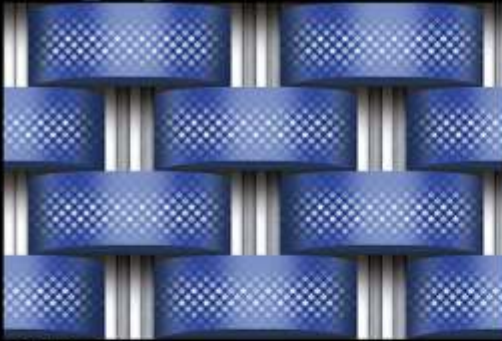
4272\_L



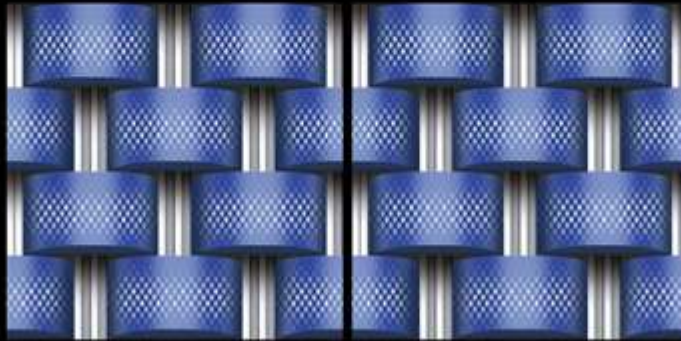
4272\_HL\_1



4272\_HL\_1



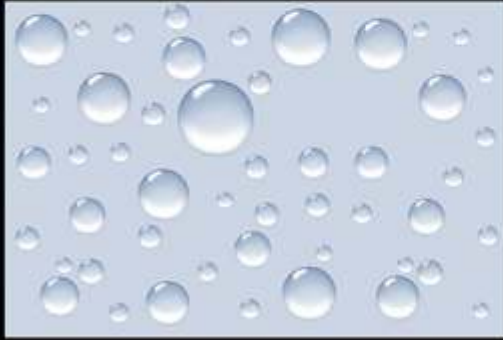
4272\_D



G  
L  
O  
S  
S  
Y



4303\_LT



4303\_HL\_1\_A



4303\_HL\_1\_B



4303\_DK



G  
L  
O  
S  
S  
Y



4307\_LT



4307\_HL\_01



4307\_HL\_01



4307\_DK



G  
L  
O  
S  
S  
Y



4309\_LT



4309\_HL\_A



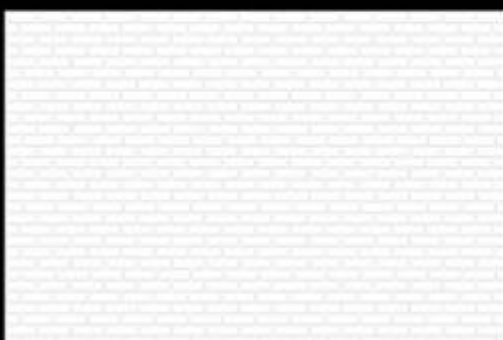
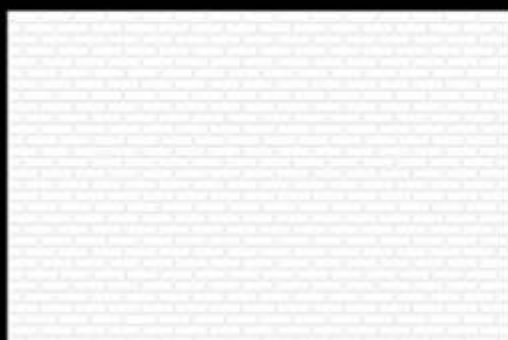
4309\_HL\_B



4309\_DK



G  
L  
O  
S  
S  
Y



5513\_L (Brick)



5513\_HA



5513\_HB



5513\_D





5513\_D



5513\_Poster\_1 (4 pcs.)



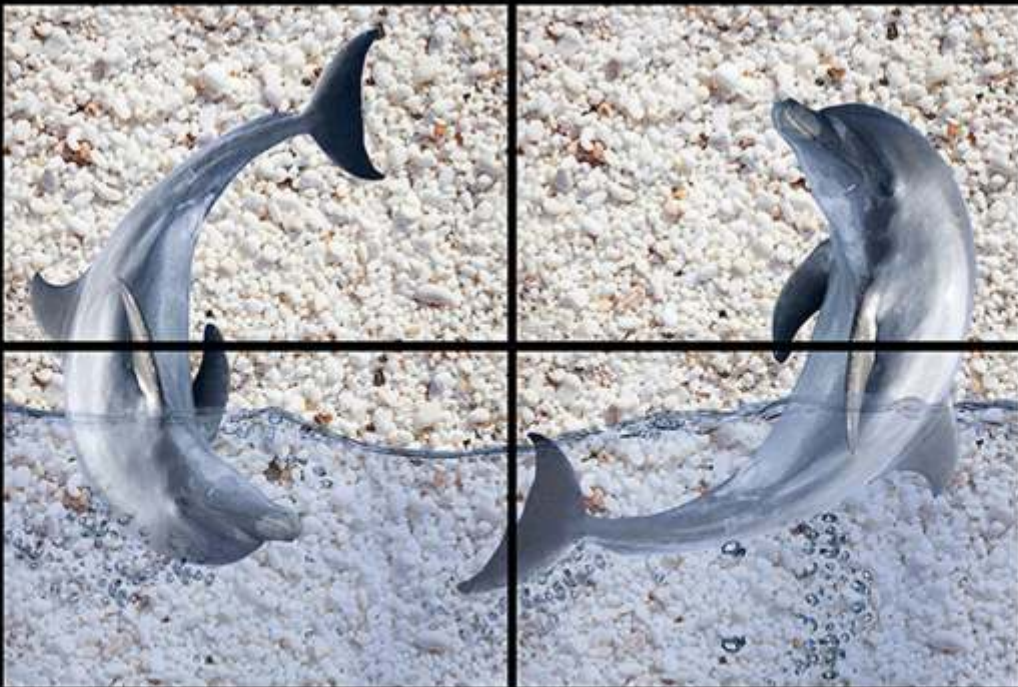
5513\_D



G  
L  
O  
S  
S  
Y



5513\_D



5513\_Poster\_2 (4 pcs.)



5513\_D



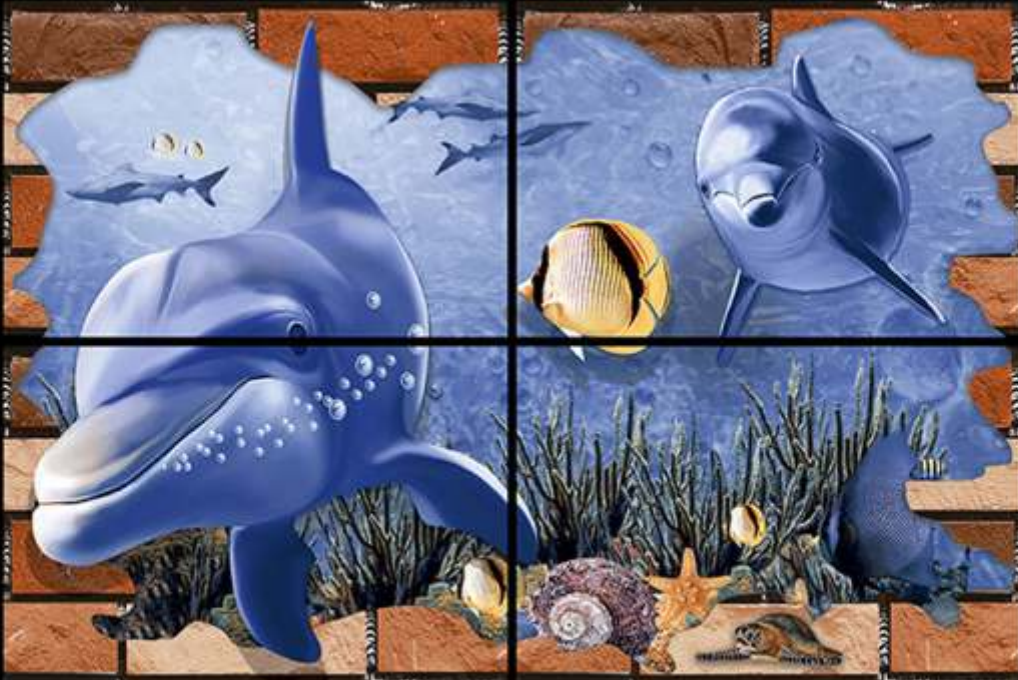
G  
L  
O  
S  
S  
Y



G  
L  
O  
S  
S  
Y



20102\_D

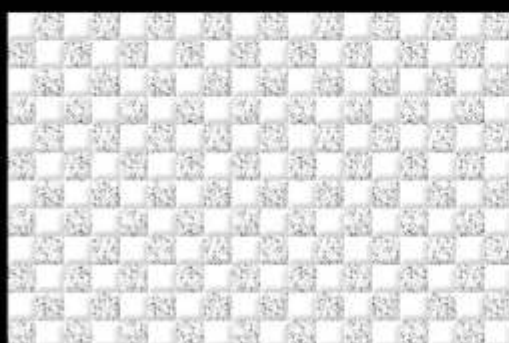


20102\_Poster\_1 (4 pcs.)

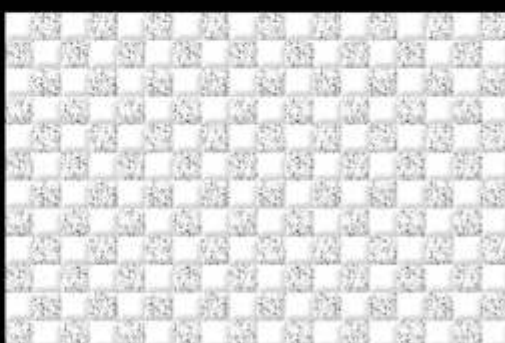


20102\_D

G  
L  
O  
S  
S  
Y



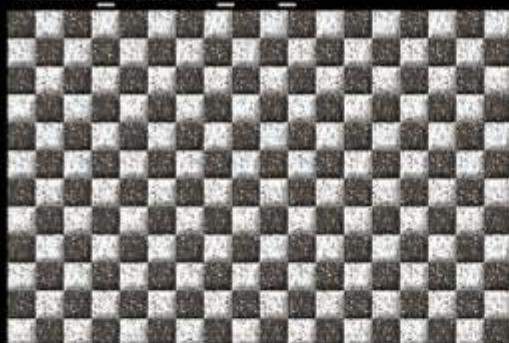
**CHEX\_WHITE**



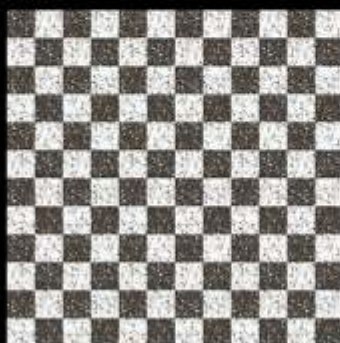
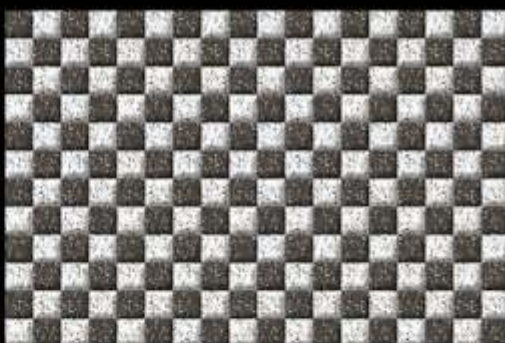
**CHEX\_BLACK\_HL\_1**



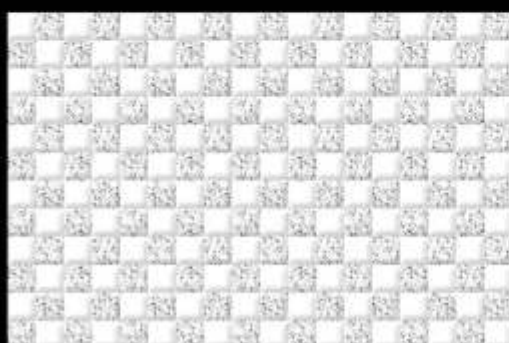
**CHEX\_BLACK\_HL\_2**



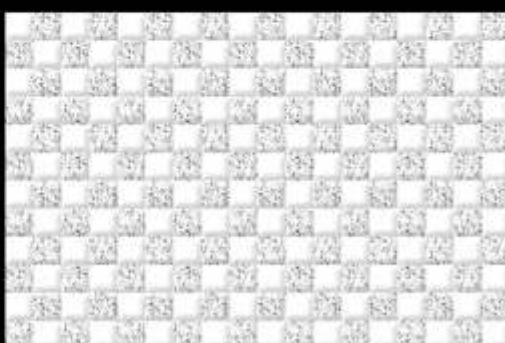
**CHEX\_BLACK**



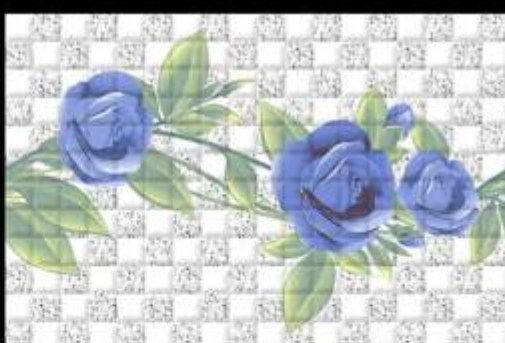
G  
L  
O  
S  
S  
Y



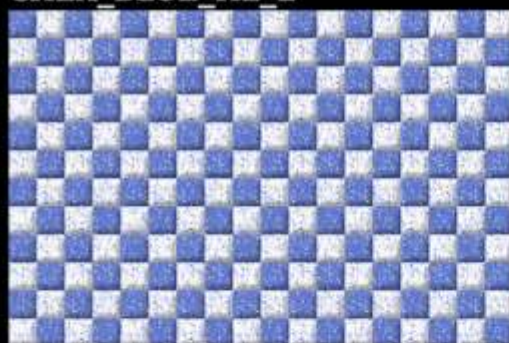
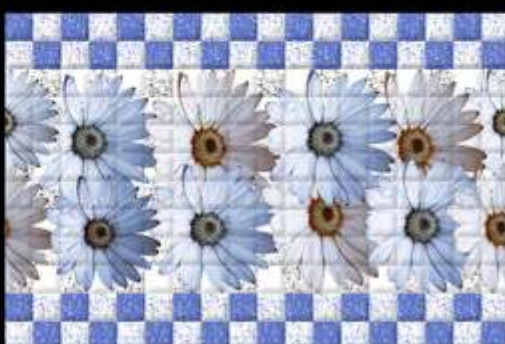
CHEX\_WHITE



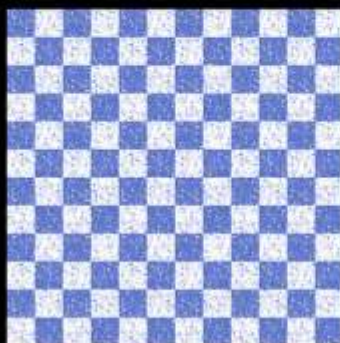
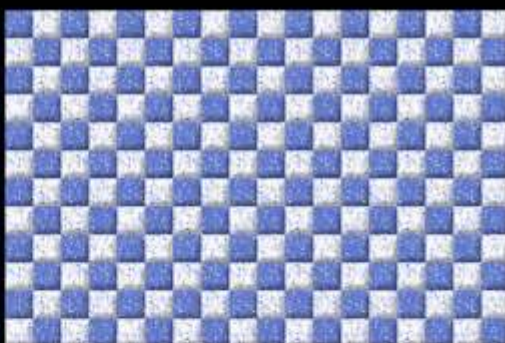
CHEX\_BLUE\_HL\_1



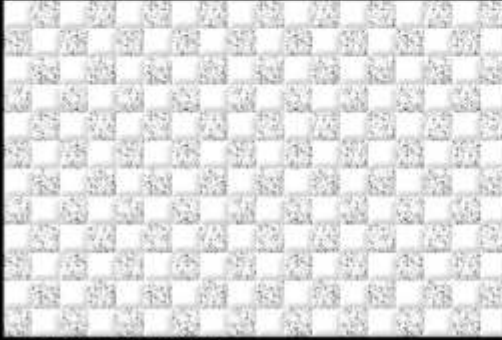
CHEX\_BLUE\_HL\_2



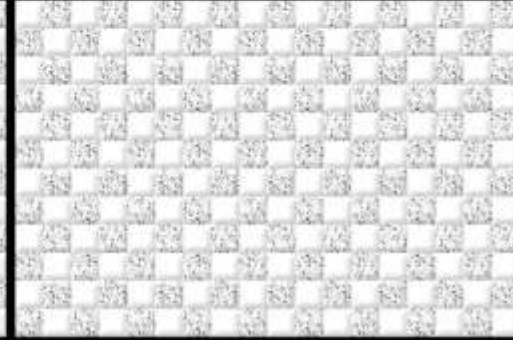
CHEX\_BLUE



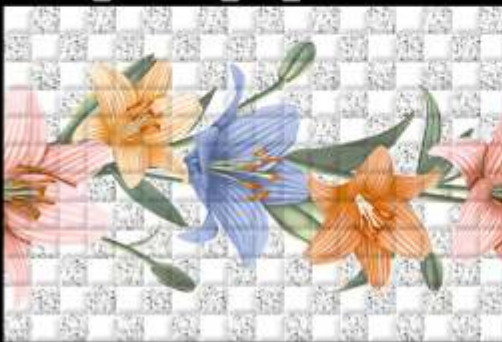
G  
L  
O  
S  
S  
Y



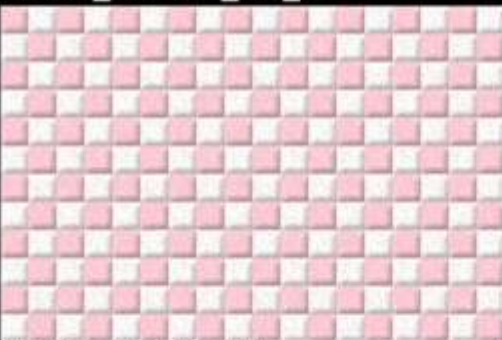
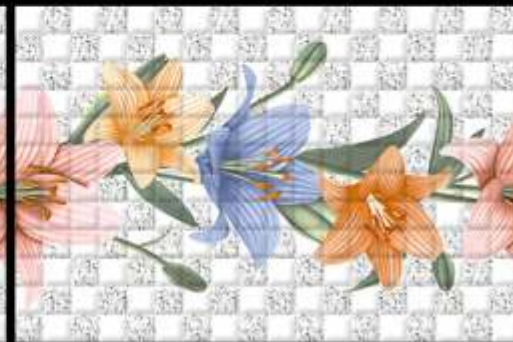
CHEX\_WHITE



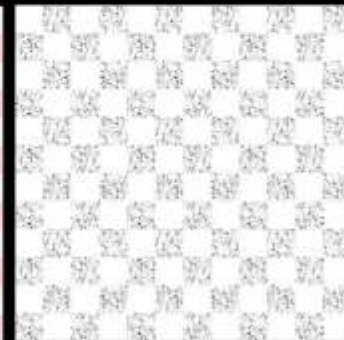
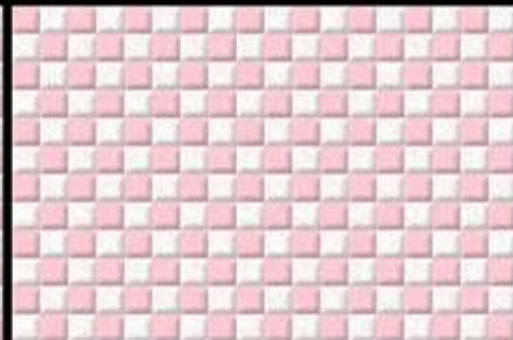
CHEX\_WHITE\_HL\_1



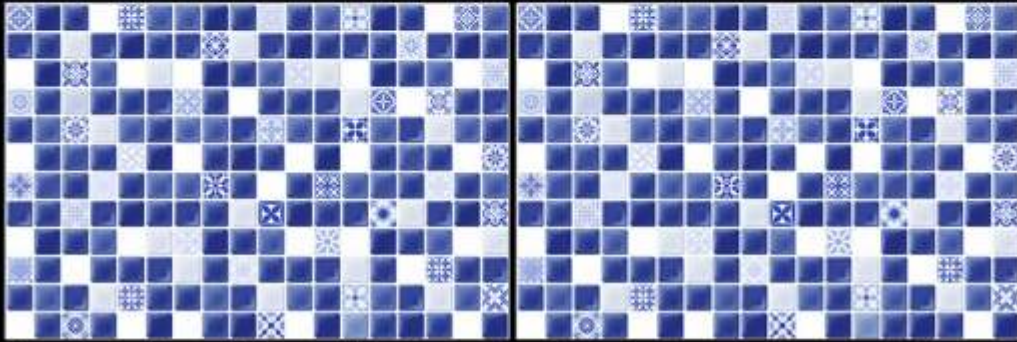
CHEX\_WHITE\_HL\_1



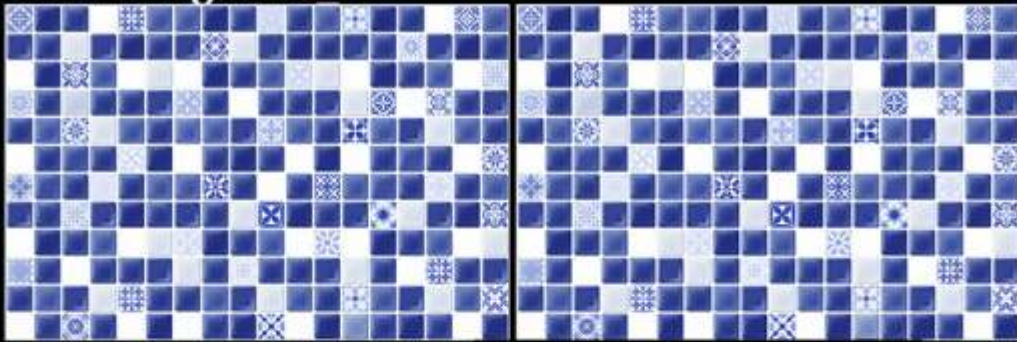
CHEX\_MAGENTA



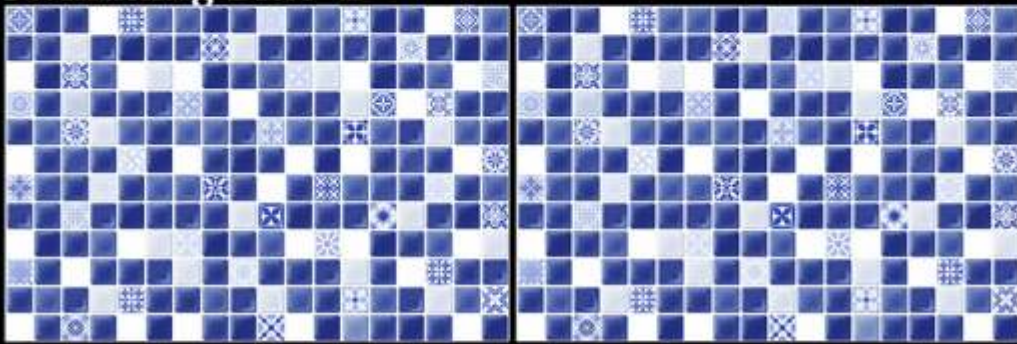
G  
L  
O  
S  
S  
Y



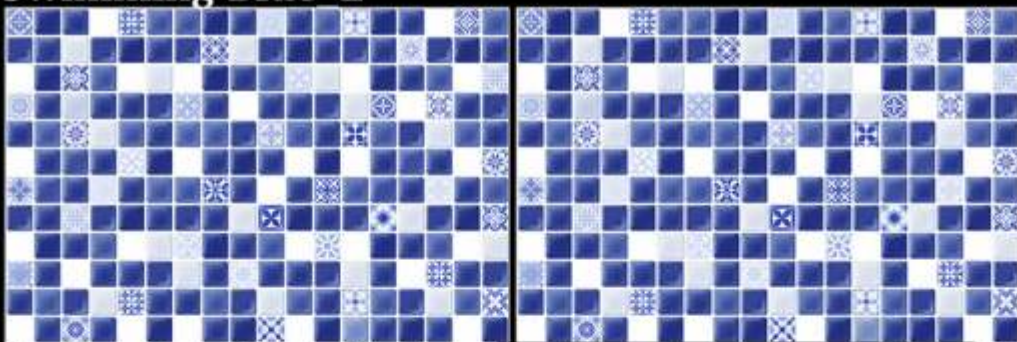
**Swimming Blue 2**



**Swimming Blue 2**

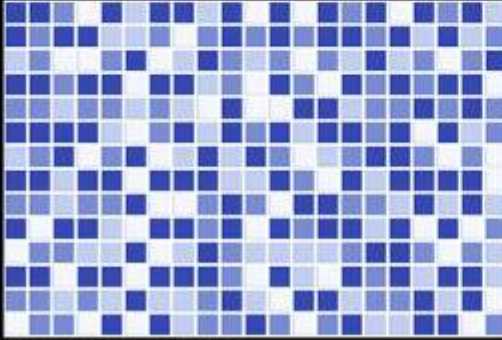


**Swimming Blue 2**

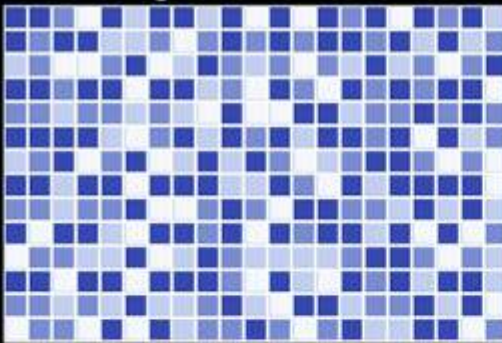
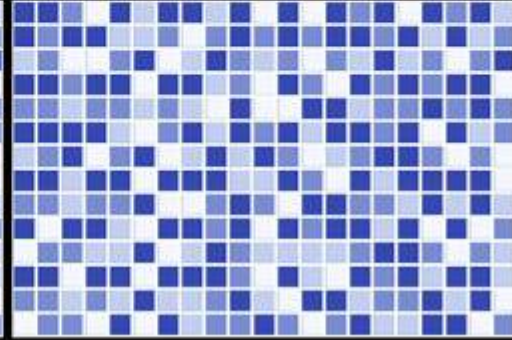


**Swimming Blue 2**

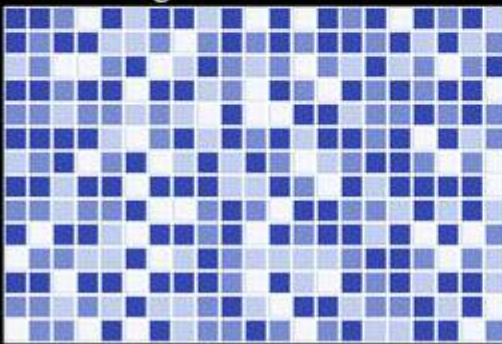
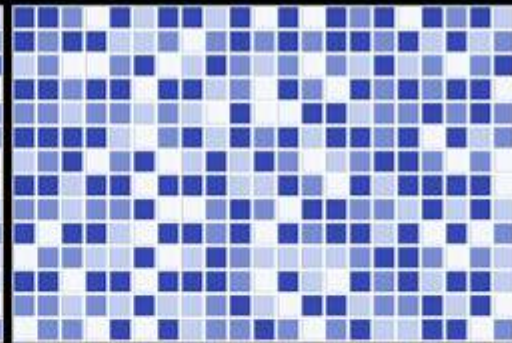
G  
L  
O  
S  
S  
Y



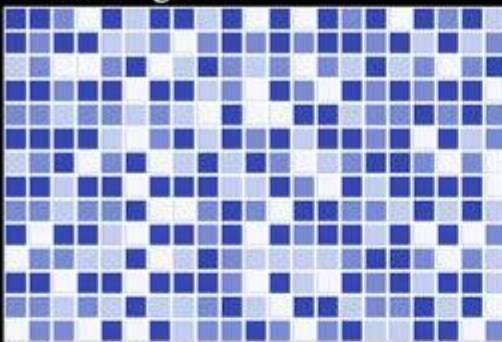
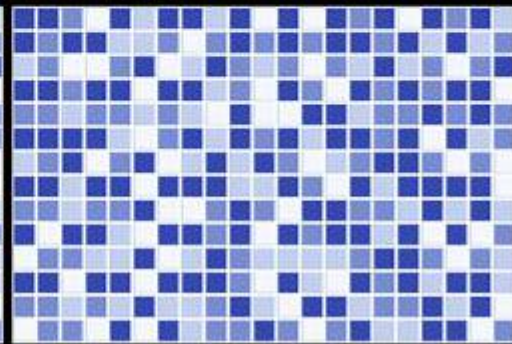
Swimming Blue



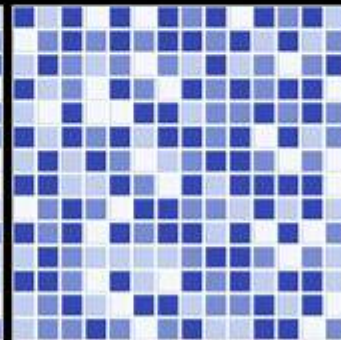
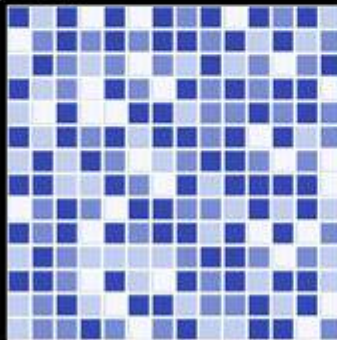
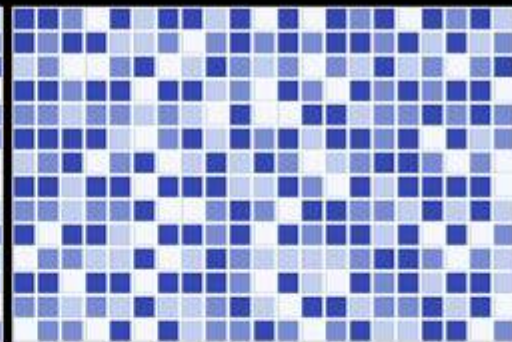
Swimming Blue



Swimming Blue



Swimming Blue



## TILES LAYING INSTRUCTION



### Wall requirement

The wall should strong and flat, surface be smooth, the wall should be waxed/printed. wall should be clean and dry, if the tiling has to be done on plywood the surface of wall should be sealed with 50% volume mixture of PVA and water.



### Tiles Preparation

Mix the tiles from different cartoon which will help in find blending of shades.



### Tiles laying

Firstly, apply the high quality ceramic adhesive on the wall and place first title on the corner. Apply even pressure on the four corner of the tile to ensure sticking. fill the area of wall that can be filled with the tiles without cutting and leave it for at least 12 hour. feel the rest of area with the measures and cut tiles.



### Tamping Process

To ensure the proper contact of tiles with the wall, evenly temp the tiles with a rubber mallet tamp



### Applying Grout

On the next day, the grouting is done. Apply the grout diagonally between the tiles using a sponge to fill the gaps between the tiles. clean and wipe the surplus grout with a sponge.



### Curve Cutting

To fit the tiles in a curved surface of washbasin etc. measure and mark the curve on cardboard and place the cardboard on the to cut it.



### Hole Cutting

To pass the pipe through the tile, the tile has to be cut in a specific manner. mark the position on the tile. Which the pipe will occupy. Draw a straight line passing through the center of the Cut the tile on the drawn. Cut the semi circle on each of the half and when these two halves placed together will form a hole.



### Window Recess Tiling and Cutting

Tile has to be cut in "L" shape for window recess. Cut a line from center to edge and than draw a right angle line vertical down. Cut the line to get no "L" shape that can fit in a window.



### Accessory Tile Fitting

While laying the normal tiles, keep an empty space where a accessory tiles will be fit. Apply the adhesive on

## UTILITY OF WALL TILES



Multiplex



Industry



Hotel



Religion Place



School



Bank



Airport



Home



Gymnasium



Hospital



Super Market



Dance Mall

## Technical Specification

Characteristics	International Standard	Our VALUE
1. Deviations in Length & Width	±0.2%	±0.08%
2. Deviations in Thickness	±4.00%	±3.00%
3. Straightness of Side	N.A.	N.A.
4. Rectengularity	±0.15%	±0.08%
5. Surface Quality	Min 95%	Min 95%
<b>Physical Properties</b>		
1. Water Absorption	≥10%	14-17%
2. Bending Strength	Avg. 15N/mm <sup>2</sup>	17N Minimum
3. Scratch Hardness (Mohs)	Min 3	Min 3
5. Surface Abrasion	N.A.	N.A.
6. Crazing	4 Cycle	4 Cycle
<b>Chemical Properties</b>		
8. Staining Resistance	Class 1	Passes
8. Household Chemicals	Class AA	Resistance to all, except hydrofluoric acid & its compound
<b>Thermal Properties</b>		
Thermal Shock	N.A.	N.A.
Thermal Expansion	9x10 <sup>-6</sup> K <sup>-1</sup>	Complies

## Packing Details

Size	Thickness (Approx)	Packing / Per Box	Sq. Meter/Box	Weight/Box (Approx)
300x450mm	8.2mm	6 Pcs.	0.81	10.8 Kg
300x300mm	8.0mm	8 Pcs.	0.72	9.7 Kg

## Export Details

Size	Box/Pallet	Pallet/Container	Sq. Meter/Container	Box/Container
300x450mm	108	23	2012	2484
300x300mm	108	23	2012	2484





**UDAY INDUSTRIES**

8-A, N.H., Opp. Lalpar, Morbi-363 642. (Guj.) INDIA.

Web.: [www.udayind.com](http://www.udayind.com)

e-mail : [marketing@udayind.com](mailto:marketing@udayind.com)

Cell : +91 99099 72245, +91 98253 23287