

UDAYTM
INDUSTRIES

12x18
KITCHEN
COLLECTION



2023
Collection



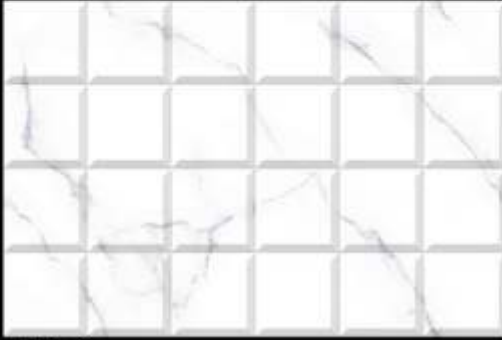
About Us...

UDAY INDUSTRIES is one of the best-known glazed tiles manufacturing company in the field of ceramics. The company is proud of its high-tech production system, designed by its most sophisticated research department, to produced wide range of high quality Wall tiles.

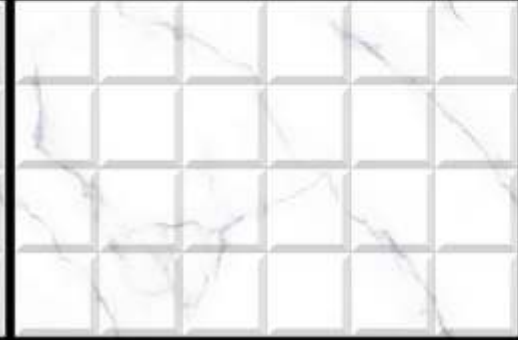
The company carries the vision to cater world class glazed tiles. It believes in producing superior quality ceramic glazed tiles with sharp vision on market.

It takes a lot of skill to design and manufacture in a competitive market but the company has track record of many successful years as a leading ceramic company. The company has well established dealer network throughout the country and it has marked it presence in export market of various countries.





118_L



118_HL_1



118_HL_2



118_HL_4



118_HL_5



118_HL_6



118_HL_8

S
U
P
E
R

W
H
I
T
E

G
L
O
S
S
Y



128_L



128_HL_1



128_HL_2



128_D



G
L
O
S
S
Y



131_L



131_HL_2



131_HL_5



131_HL_6



131_HL_10



131_D



G
L
O
S
S
Y



139_L



139_HL_3



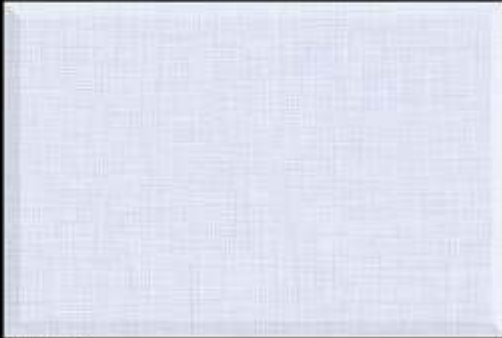
139_HL_3



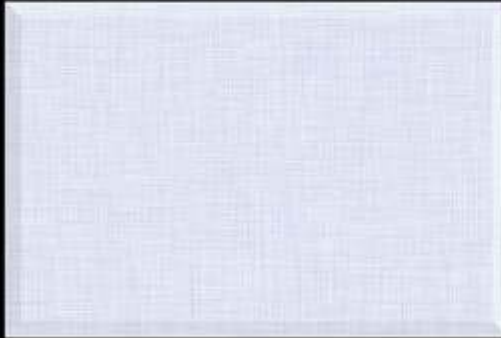
139_D



G
L
O
S
S
Y



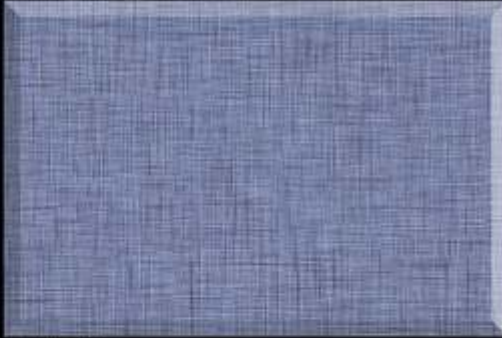
170_L



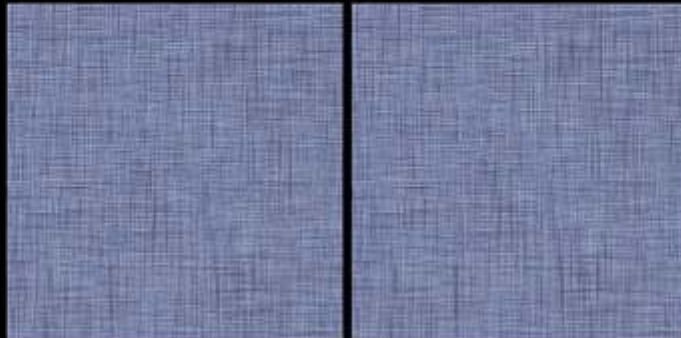
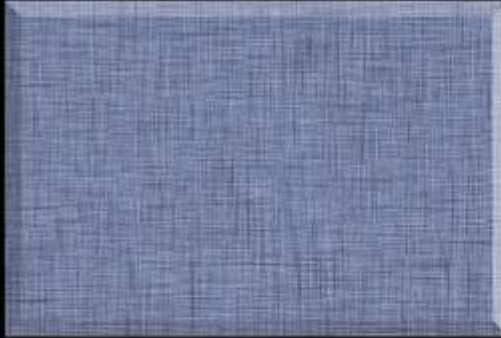
170_HL_5



170_HL_5



170_D



G
L
O
S
S
Y



196_L



196_HL_1



196_HL_1



196_D



G
L
O
S
S
Y



196-L



196-HL-4



196-HL-5



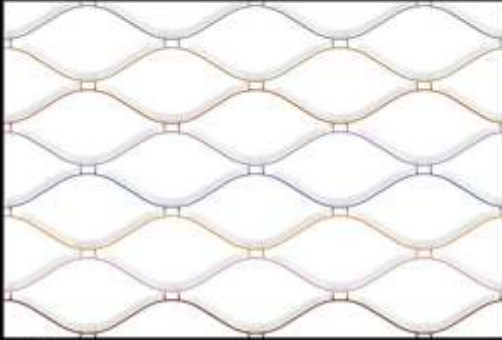
196-HL-6



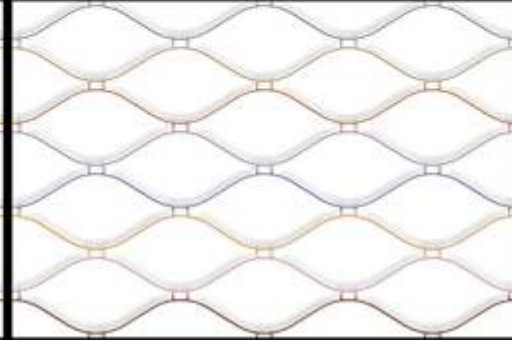
196-D



G
L
O
S
S
Y



306_L



306_HL_1



306_HL_2



306_HL_3



306_HL_4



306_HL_5



G
L
O
S
S
Y



309_L



309_HL_2



309_HL_3



309_D



G
L
O
S
S
Y



327_L



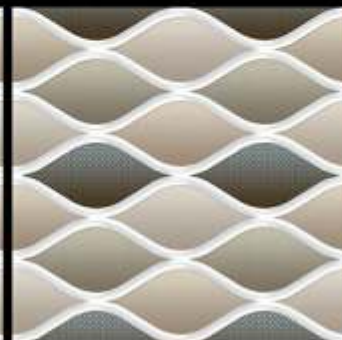
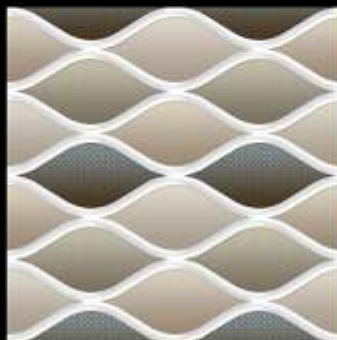
327_HL_2



327_HL_3



327_D



G
L
O
S
S
Y



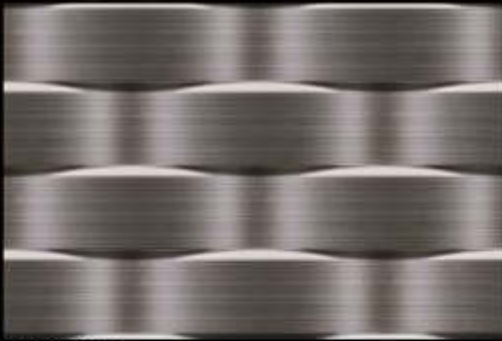
1498_L



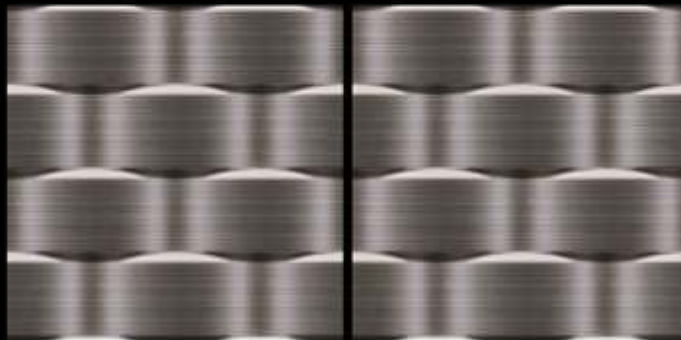
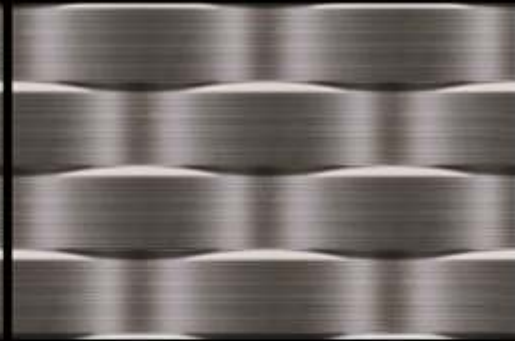
1498_KT_1



1498_KT_1



1498_D



G
L
O
S
S
Y



4031_L



4031_HL_3



4031_HL_3



4031_D



G
L
O
S
S
Y



4037_L (Random)



4037_HL_1



4037_HL_2



4037_HL_3



G
L
O
S
S
Y



4054_L



4054_HL_2



4054_HL_4



4054_HL_5



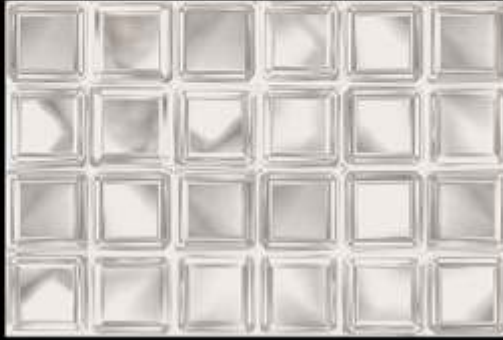
4054_D



G
L
O
S
S
Y



4071_L



4071_HL_1



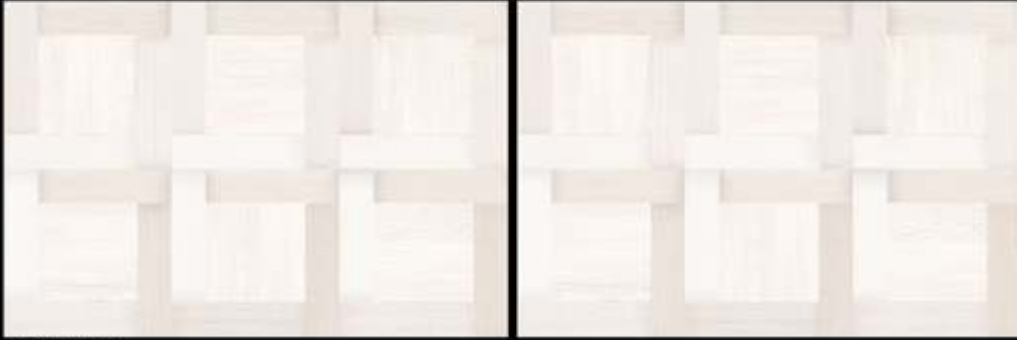
4071_HL_1



4071_D



G
L
O
S
S
Y



4075_L



4075_HL_2



4075_HL_2



4075_D



G
L
O
S
S
Y



4081_L



4081_HL_1



4081_HL_2



4081_L

G
L
O
S
S
Y



4090_L



4090_HL_1



4090_HL_1



4090_D

G
L
O
S
S
Y



4091_L



4091_HL_1



4091_HL_1



4091_L



G
L
O
S
S
Y



4095_L



4095_HL_1



4095_HL_2



4095_L



G
L
O
S
S
Y



4096_L



4096_HL_1



4096_HL_2



4096_D



G
L
O
S
S
Y



4100_L



4100_HL_2



4100_HL_2



4100_D



G
L
O
S
S
Y



4136_L



4136_HL_1

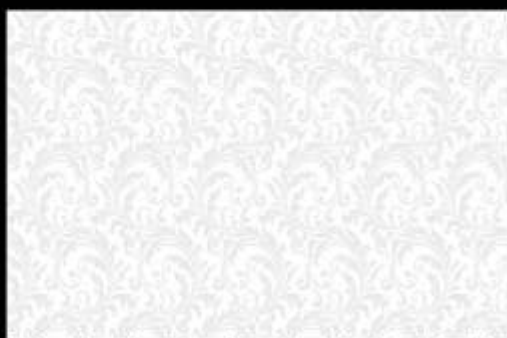


4136_HL_1

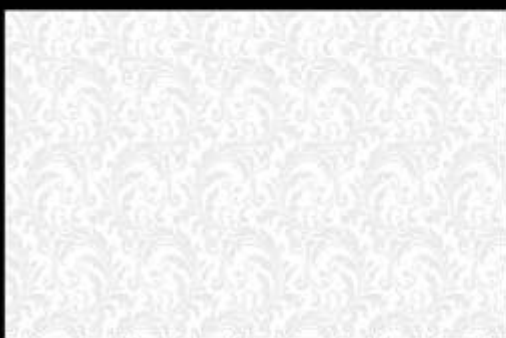


4136_L





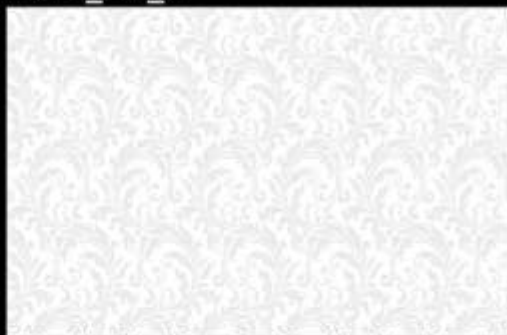
4140_L



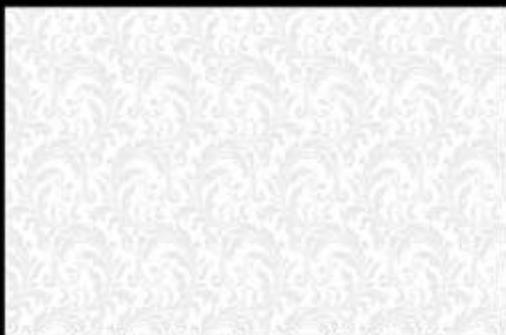
4140_HL_1



4140_HL_2



4140_L



G
L
O
S
S
Y

G
L
O
S
S
Y



4158_HL_1



4158_HL_1



4158_HL_2



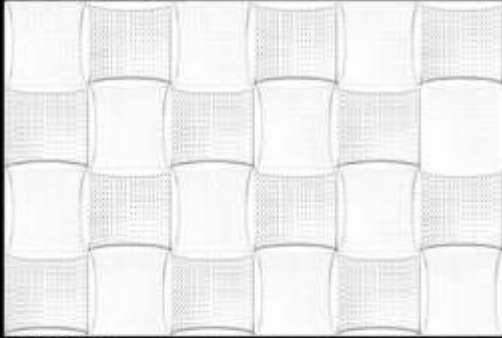
4158_HL_3



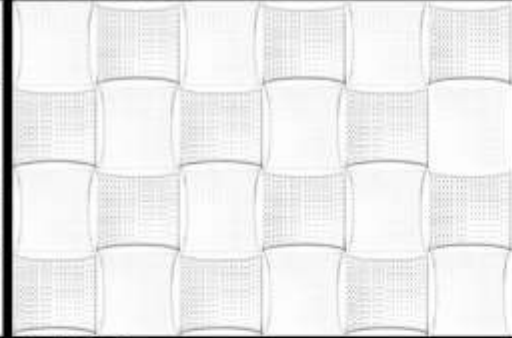
4158_HL_4



4158_HL_5



4158_L

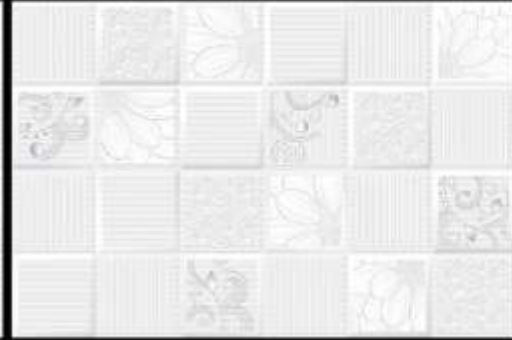


4158_L

G
L
O
S
S
Y



4161_L



4161_HL_1



4161_HL_1



4161_L



G
L
O
S
S
Y



4164_L



4164_HL_1



4164_HL_2



4164_L

G
L
O
S
S
Y



4170_L



4170_HL_1



4170_HL_2



4170_L



G
L
O
S
S
Y



4180_L



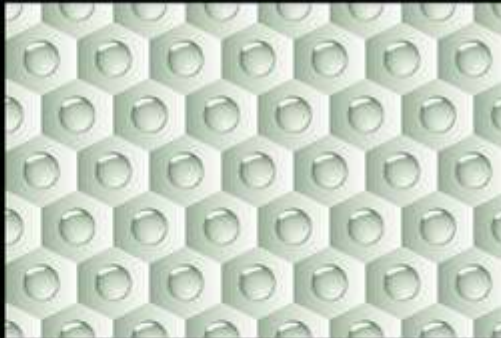
4180_HL_2



4180_HL_2



4180_D



G
L
O
S
S
Y



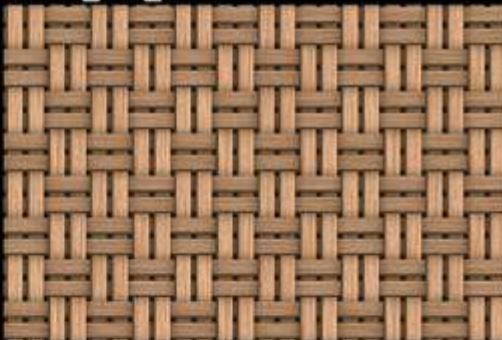
4183_L



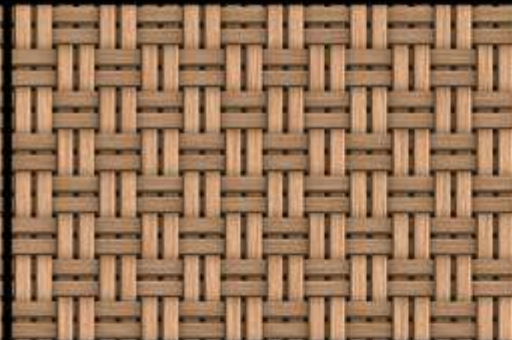
4183_HL_1



4183_HL_2



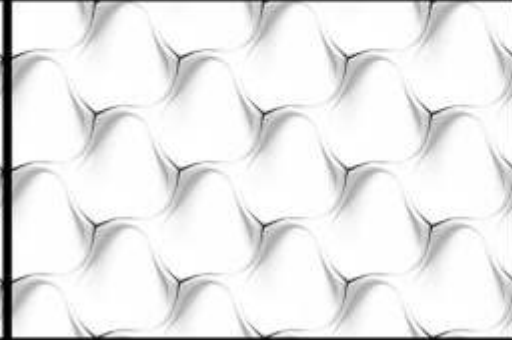
4183_D



G
L
O
S
S
Y



4186_L



4186_HL_1



4186_HL_2



4186_HL_3



4186_HL_4



4186_D



G
L
O
S
S
Y



4190_L



4190_HL_2



4190_HL_2



4190_D



G
L
O
S
S
Y



4194_L



4194_HL_1



4194_HL_1



4194_D

G
L
O
S
S
Y



4196_L



4196_HL_1



4196_HL_2



4196_L



G
L
O
S
S
Y



4200_L



4200_HL_3



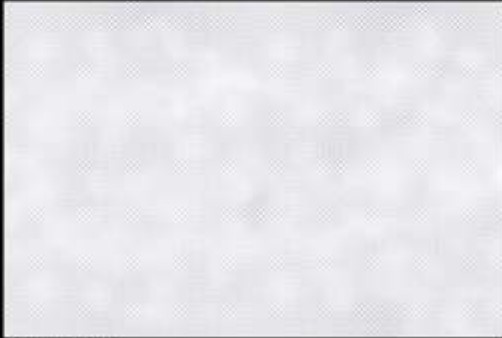
4200_HL_3



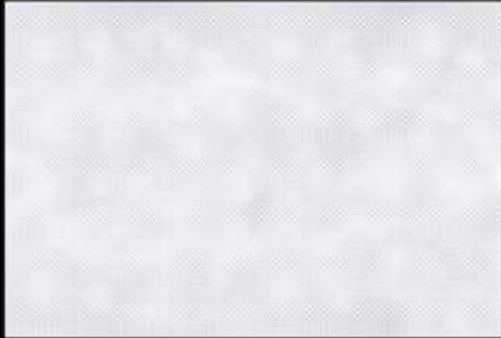
4200_D



G
L
O
S
S
Y



4206_L



4206_HL_1



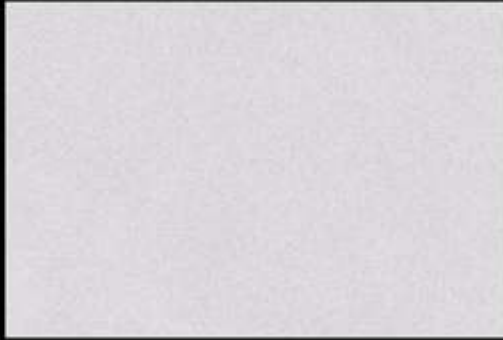
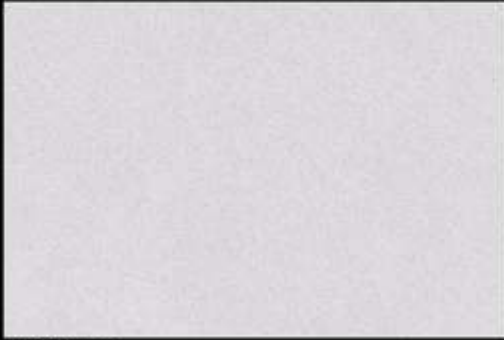
4206_HL_1



4206_L



G
L
O
S
S
Y



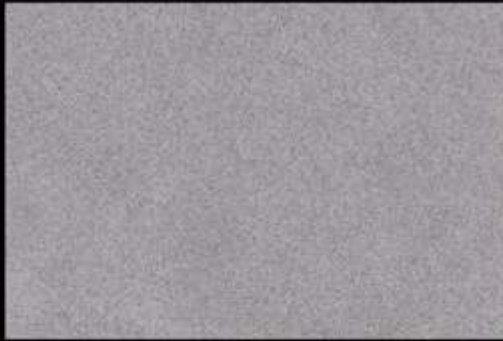
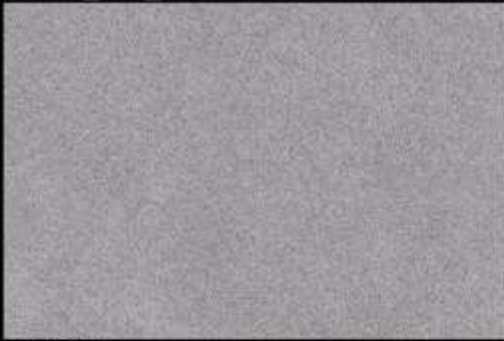
4209_L



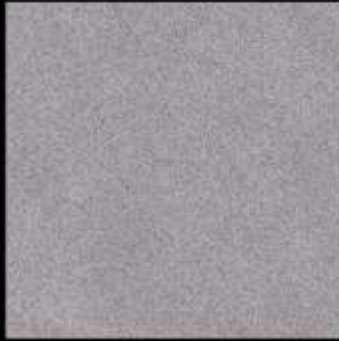
4209_HL_4



4209_HL_4



4209_D



G
L
O
S
S
Y



4222_L



4222_HL_1



4222_HL_2



4222_L

G
L
O
S
S
Y



4224_L



4224_HL_3



4224_HL_3



4224_D



G
L
O
S
S
Y



4225_L



4225_HL_1

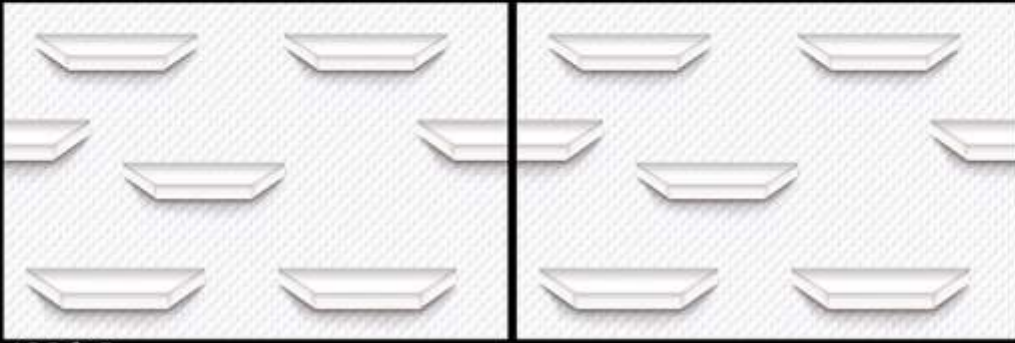


4225_HL_1



4225_L

G
L
O
S
S
Y



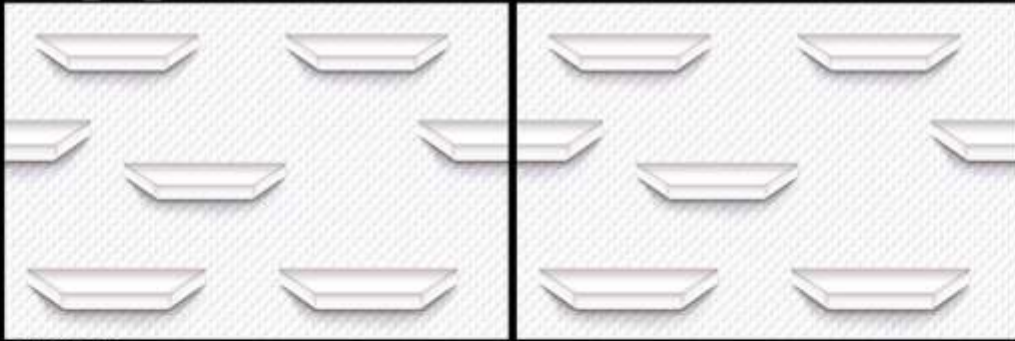
4226_L



4226_HL_1



4226_HL_2



4226_L

G
L
O
S
S
Y



4227_L



4227_HL_5



4227_HL_5



4227_D



G
L
O
S
S
Y



4234_L



4234_HL_1

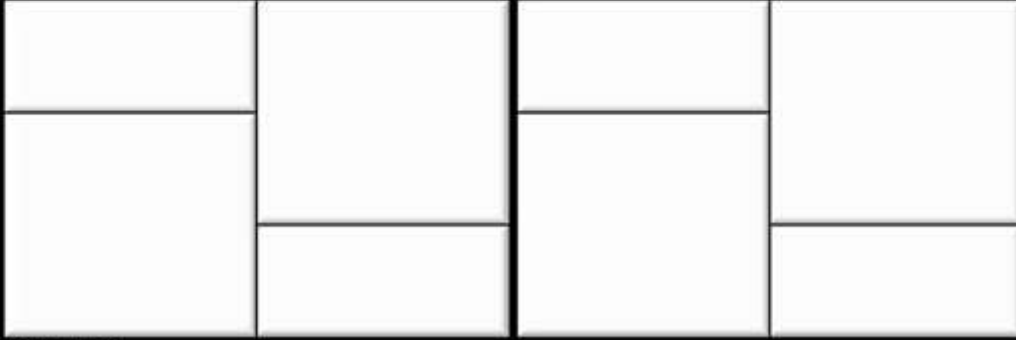


4234_HL_2



4234_L

G
L
O
S
S
Y



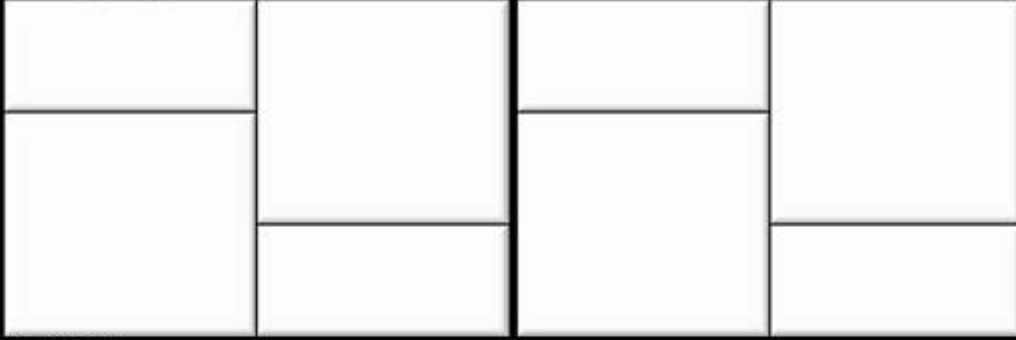
4235_L



4235_HL_1

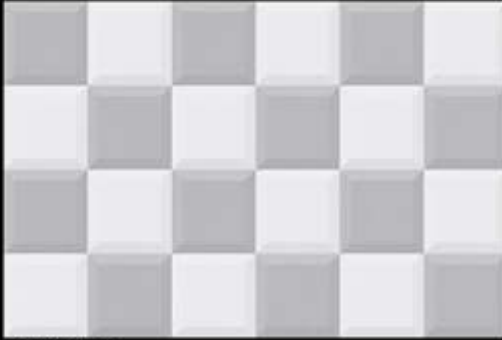


4235_HL_2

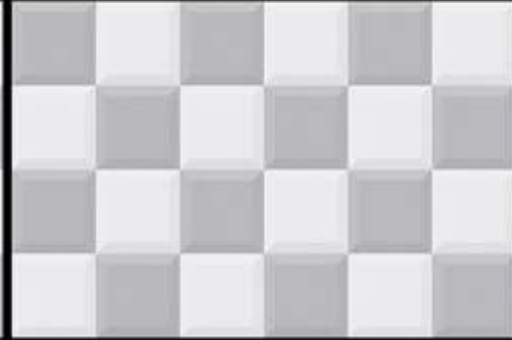


4235_L

G
L
O
S
S
Y



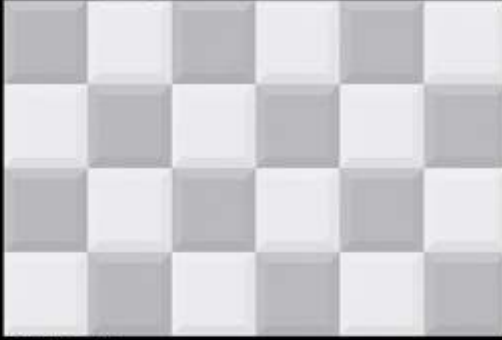
4242_L



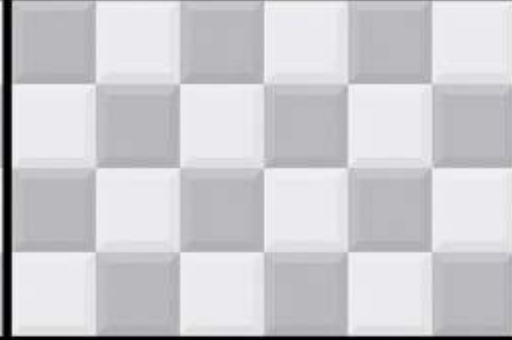
4242_HL_1



4242_HL_2



4242_L



G
L
O
S
S
Y



4243_L (Plain)



4243_HL_1 (Plain)



4243_HL_2 (Plain)



4243_D (Plain)



G
L
O
S
S
Y



4244_L



4244_HL_1



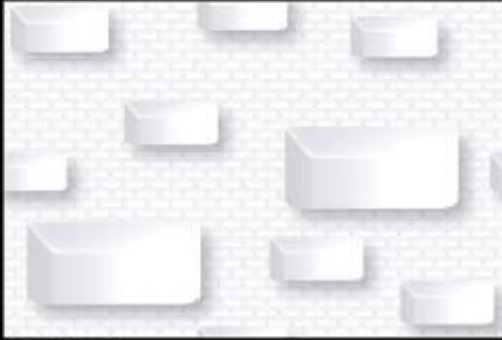
4244_HL_1



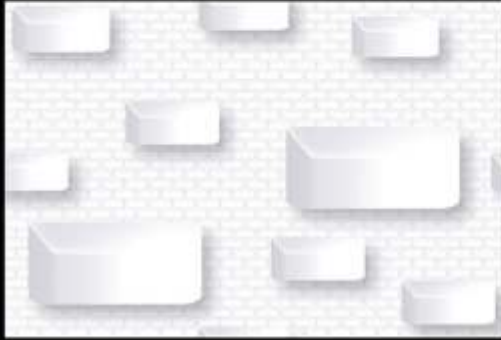
4244_D



G
L
O
S
S
Y



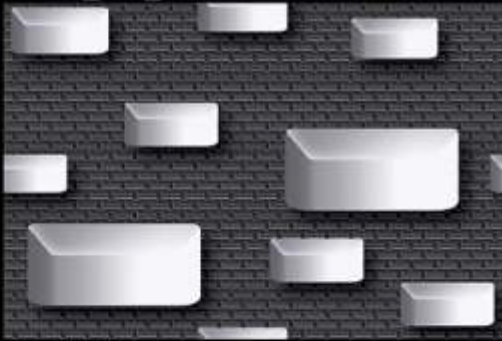
4274_L



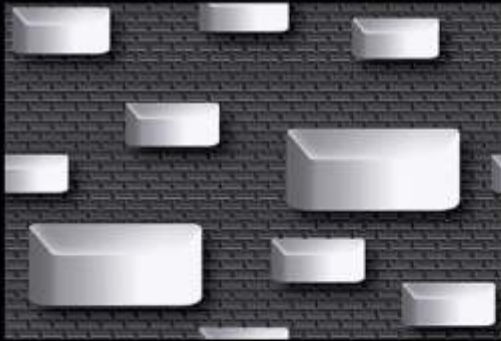
4274_HL_1



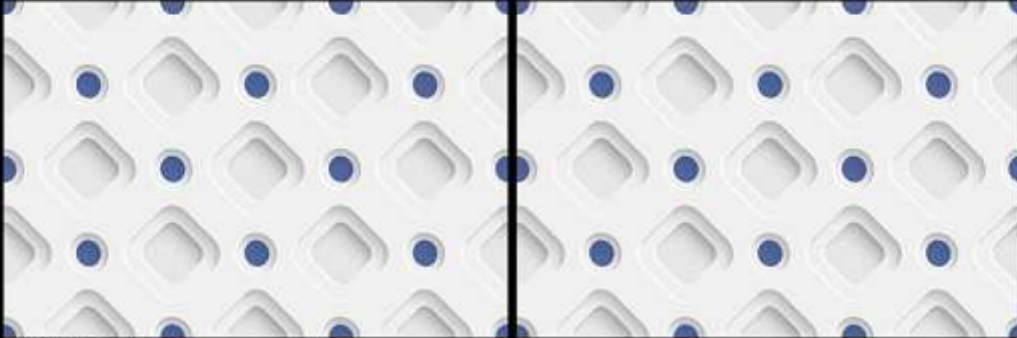
4274_HL_2



4274_D



G
L
O
S
S
Y



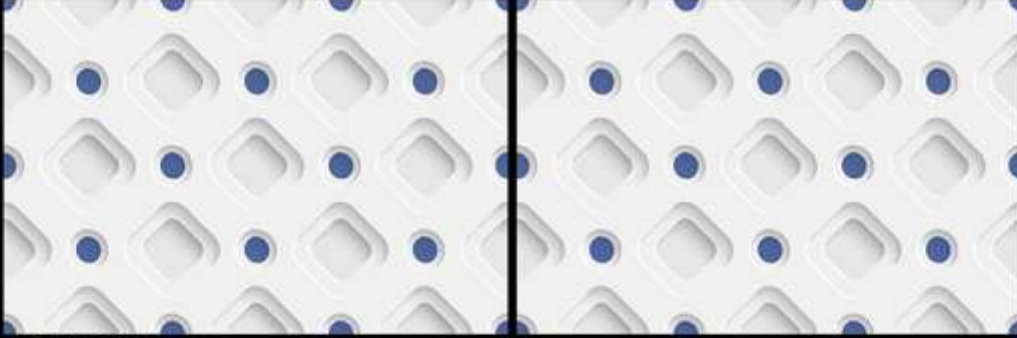
4277_LT



4277_HL_1



4277_HL_2



4277_LT

G
L
O
S
S
Y



4278_LT



4278_HL_1



4278_HL_2



4278_LT



G
L
O
S
S
Y



4281_L



4281_HL_1



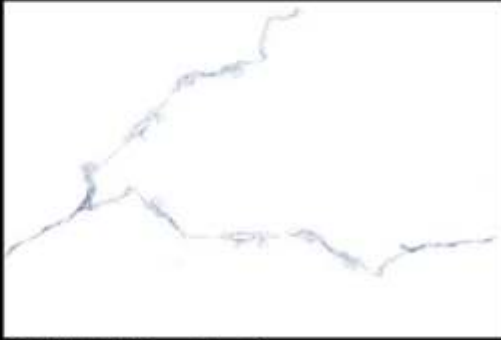
4281_HL_2



4281_D



G
L
O
S
S
Y



4284_L (Random)



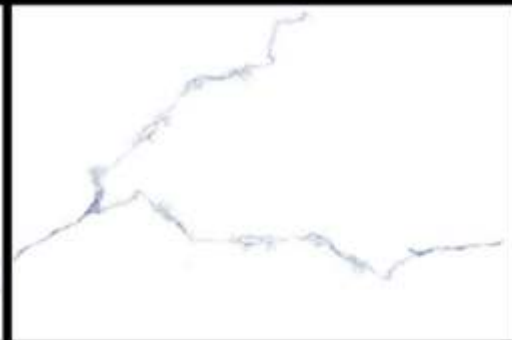
4284_HL_1



4284_HL_2



4284_L (Random)



G
L
O
S
S
Y



4290_L



4290_HL_1



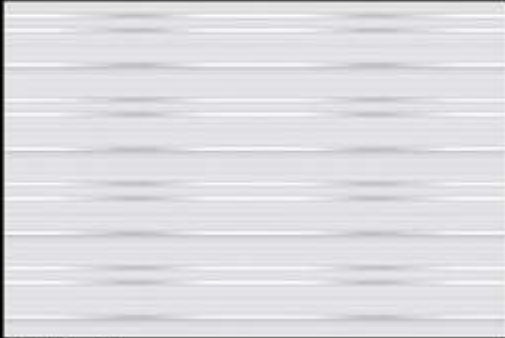
4290_HL_2



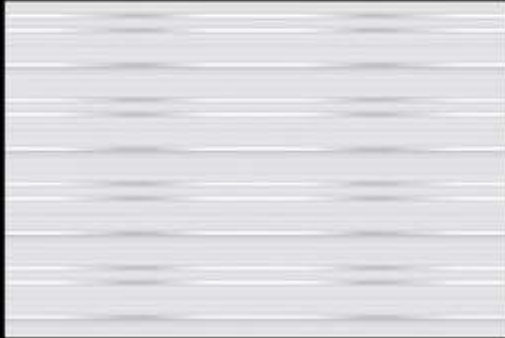
4290_D



G
L
O
S
S
Y



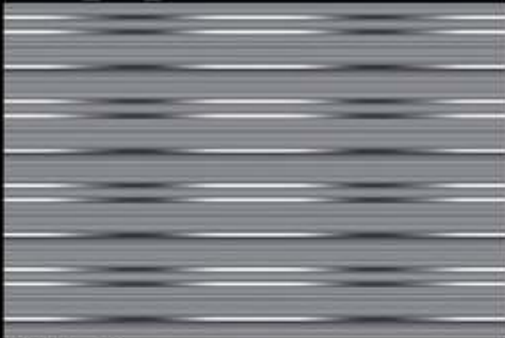
4291_L



4291_HL_1



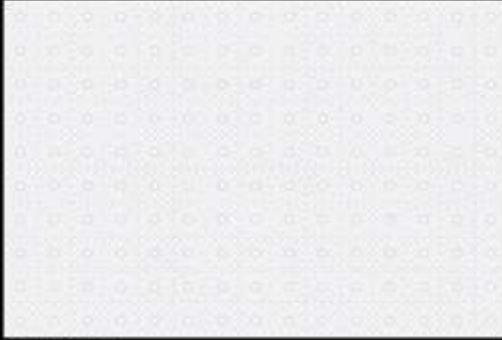
4291_HL_2



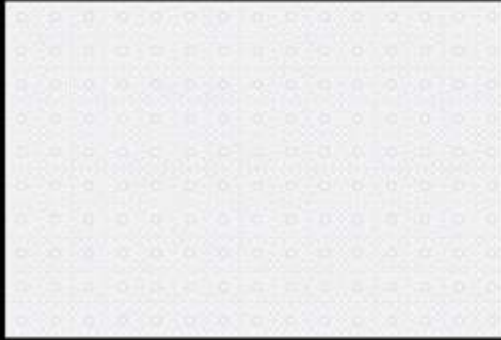
4291_D



G
L
O
S
S
Y



4292_L



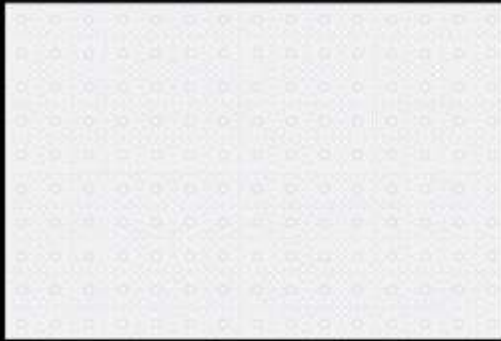
4292_HL_1



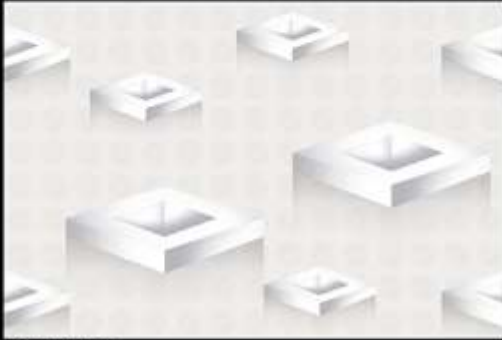
4292_HL_2



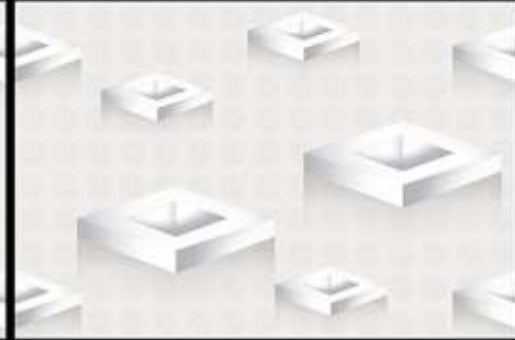
4292_L



G
L
O
S
S
Y



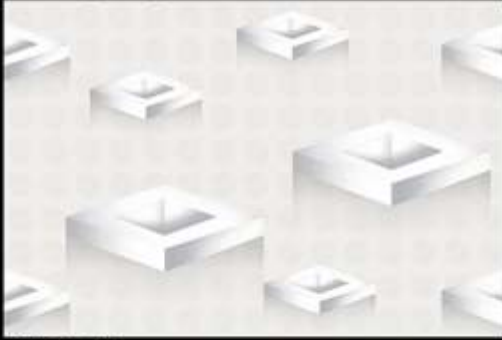
4293_L



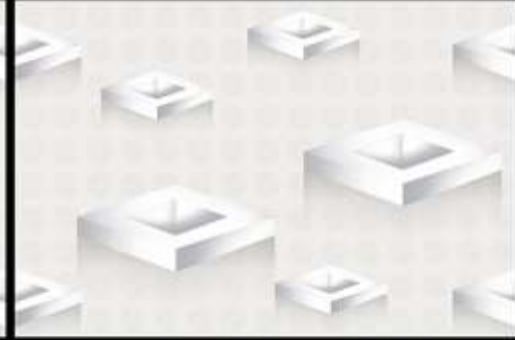
4293_HL_1



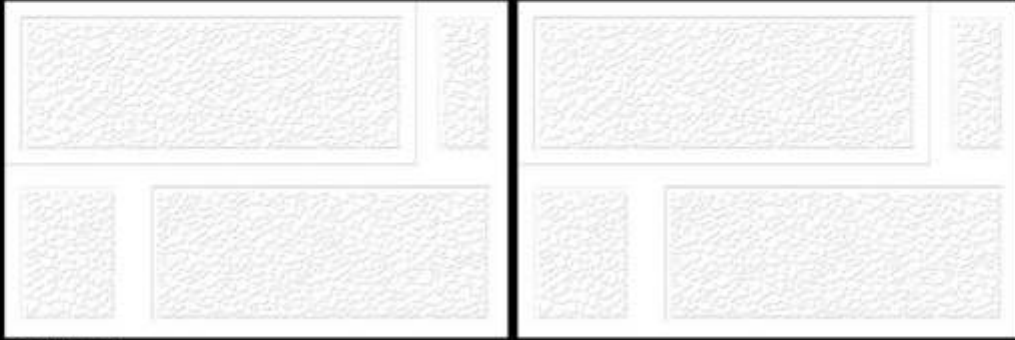
4293_HL_2



4293_L



G
L
O
S
S
Y



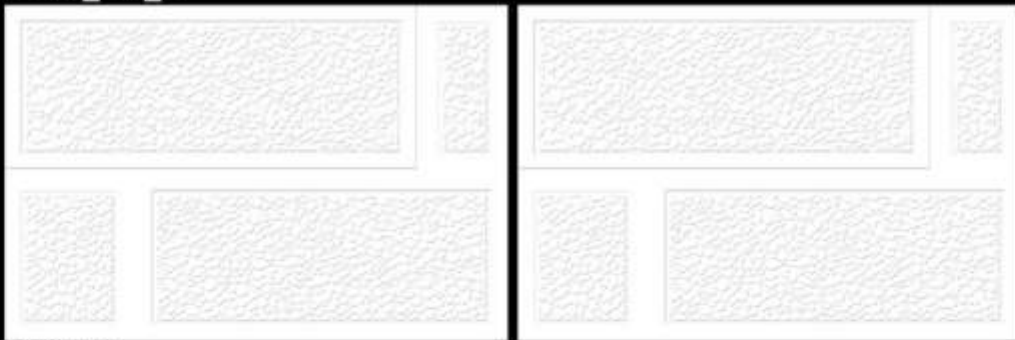
4294_L



4294_HL_1



4294_HL_1



4294_L

G
L
O
S
S
Y



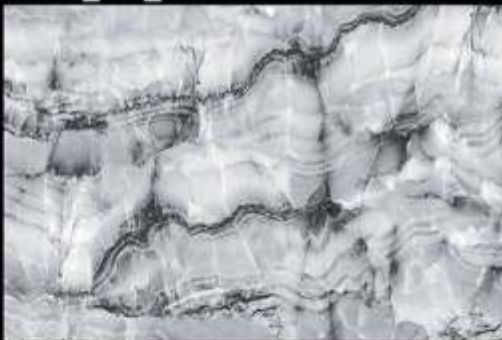
4311_LT



4311_HL_01



4311_HL_01



4311_DK



G
L
O
S
S
Y



4312_IT



4312_HL_01



4312_HL_02



4312_HL_03



S
U
P
E
R

W
H
I
T
E



4509_L



4509_HL_1



4509_HL_2



4509_L



S
U
P
E
R

W
H
I
T
E



4510_L



4510_HL_2



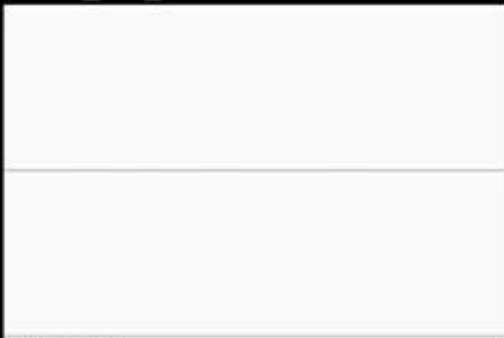
4510_HL_3



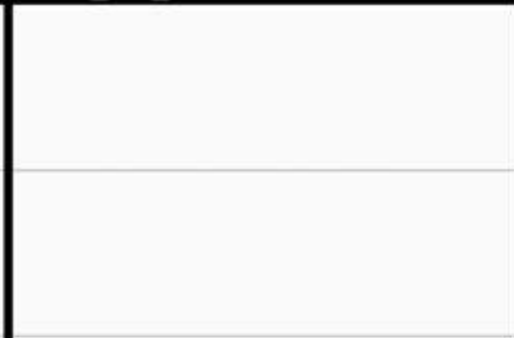
4510_HL_5



4510_HL_6



4510_L





Super White



4511_HL_2



4511_HL_4



Super White



S
U
P
E
R

W
H
I
T
E

S
U
P
E
R

W
H
I
T
E



4512_L(Random)



4512_HL_1



4512_HL_2

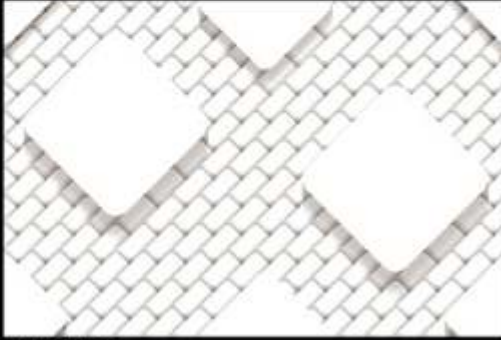


4512_L(Random)

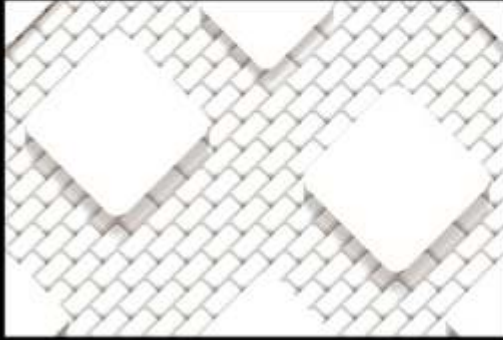


S
U
P
E
R

W
H
I
T
E



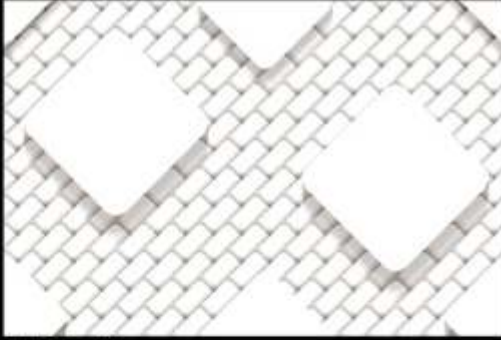
4513_L



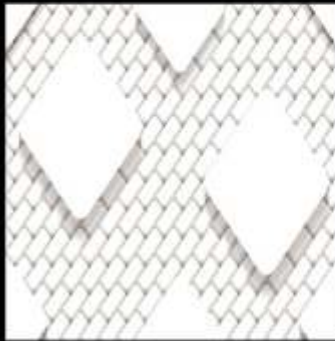
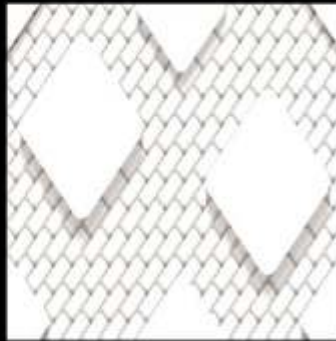
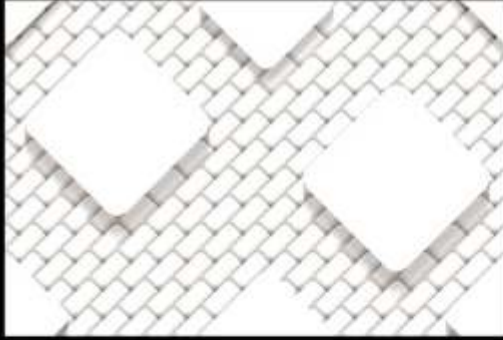
4513_HL_1



4513_HL_2



4513_L



S
U
P
E
R

W
H
I
T
E



4514_L



4514_HL_1



4514_HL_2



4514_L



G
L
O
S
S
Y



9034_L_1



9034_L_2



9034_HL_3



9034_HL_4



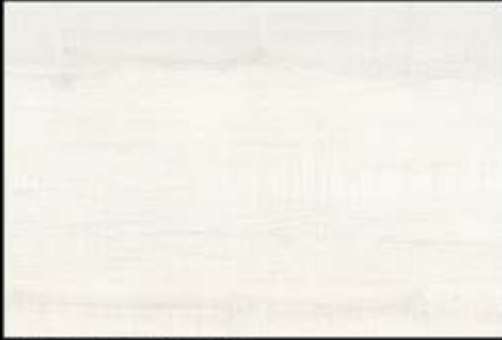
9034_HL_5



9034_L



G
L
O
S
S
Y



Clematis Dazzle



Clematis Aure A



Clematis Aure B



Clematis Dusky



TILES LAYING INSTRUCTION



Wall requirement

The wall should strong and flat, surface be smooth, the wall should be waxed/printed. wall should be clean and dry, if the tiling has to be done on plywood the surface of wall should be sealed with 50% volume mixture of PVA and water.



Tiles Preparation

Mix the tiles from different cartoon which will help in find blending of shades.



Tiles laying

Firstly, apply the high quality ceramic adhesive on the wall and place first title on the corner. Apply even pressure on the four corner of the tile to ensure sticking. fill the area of wall that can be filled with the tiles without cutting and leave it for at least 12 hour. feel the rest of area with the measures and cut tiles.



Tamping Process

To ensure the proper contact of tiles with the wall, evenly temp the tiles with a rubber mallet tamp



Applying Grout

On the next day, the grouting is done. Apply the grout diagonally between the tiles using a sponge to fill the gaps between the tiles. clean and wipe the surplus grout with a sponge.



Curve Cutting

To fit the tiles in a curved surface of washbasin etc. measure and mark the curve on cardboard and place the cardboard on the to cut it.



Hole Cutting

To pass the pipe through the tile, the tile has to be cut in a specific manner. mark the position on the tile. Which the pipe will occupy. Draw a straight line passing through the center of the Cut the tile on the drawn. Cut the semi circle on each of the half and when these two halves placed together will form a hole.



Window Recess Tiling and Cutting

Tile has to be cut in "L" shape for window recess. Cut a line from center to edge and than draw a right angle line vertical down. Cut the line to get no "L" shape that can fit in a window.



Accessory Tile Fitting

While laying the normal tiles, keep an empty space where a accessory tiles will be fit. Apply the adhesive on

UTILITY OF WALL TILES



Multiplex



Industry



Hotel



Religion Place



School



Bank



Airport



Home



Gymnasium



Hospital



Super Market



Dance Mall

Technical Specification

Characteristics	International Standard	Our VALUE
1. Deviations in Length & Width	±0.2%	±0.08%
2. Deviations in Thickness	±4.00%	±3.00%
3. Straightness of Side	N.A.	N.A.
4. Rectengularity	±0.15%	±0.08%
5. Surface Quality	Min 95%	Min 95%
Physical Properties		
1. Water Absorption	≥10%	14-17%
2. Bending Strength	Avg. 15N/mm ²	17N Minimum
3. Scratch Hardness (Mohs)	Min 3	Min 3
5. Surface Abrasion	N.A.	N.A.
6. Crazing	4 Cycle	4 Cycle
Chemical Properties		
8. Staining Resistance	Class 1	Passes
8. Household Chemicals	Class AA	Resistance to all, except hydrofluoric acid & its compound
Thermal Properties		
Thermal Shock	N.A.	N.A.
Thermal Expansion	9x10 ⁻⁶ K ⁻¹	Complies

Packing Details

Size	Thickness (Approx)	Packing / Per Box	Sq. Meter/Box	Weight/Box (Approx)
300x450mm	8.2mm	6 Pcs.	0.81	10.8 Kg
300x300mm	8.0mm	8 Pcs.	0.72	9.7 Kg

Export Details

Size	Box/Pallet	Pallet/Container	Sq. Meter/Container	Box/Container
300x450mm	108	23	2012	2484
300x300mm	108	23	2012	2484



UDAY INDUSTRIES

8-A, N.H., Opp. Lalpar, Morbi-363 642. (Guj.) INDIA.

Web.: www.udayind.com

e-mail : marketing@udayind.com

Cell : +91 99099 72245, +91 98253 23287