

UDAYTM
INDUSTRIES

12x18
POSTER
COLLECTION



2023
Collection



About Us...

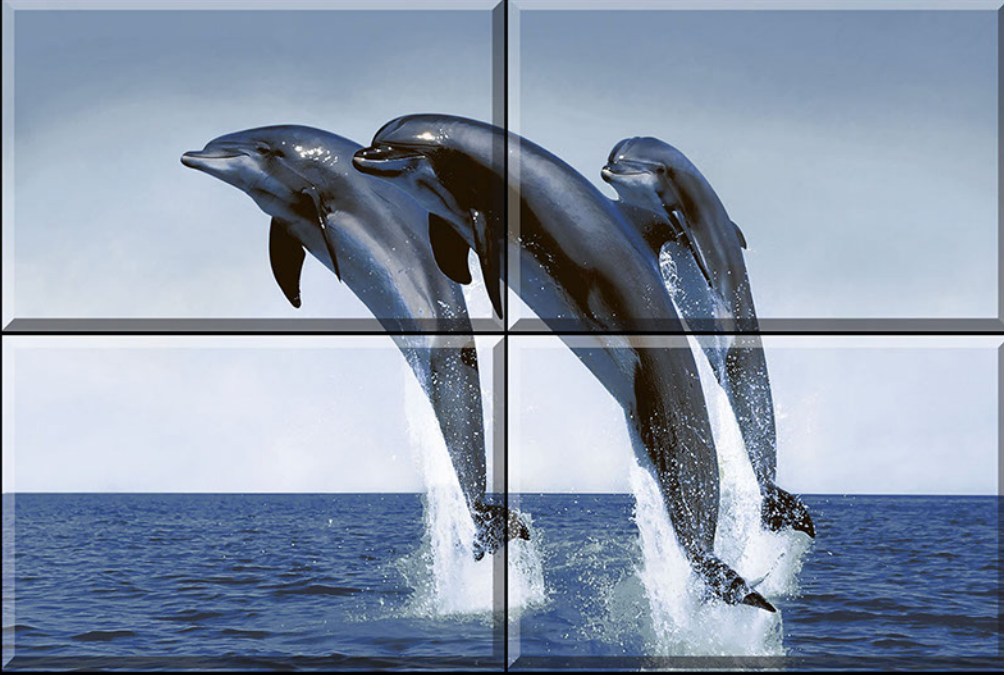
UDAY INDUSTRIES is one of the best-known glazed tiles manufacturing company in the field of ceramics. The company is proud of its high-tech production system, designed by its most sophisticated research department, to produced wide range of high quality Wall tiles.

The company carries the vision to cater world class glazed tiles. It believes in producing superior quality ceramic glazed tiles with sharp vision on market.

It takes a lot of skill to design and manufacture in a competitive market but the company has track record of many successful years as a leading ceramic company. The company has well established dealer network throughout the country and it has marked it presence in export market of various countries.



G
L
O
S
S
Y

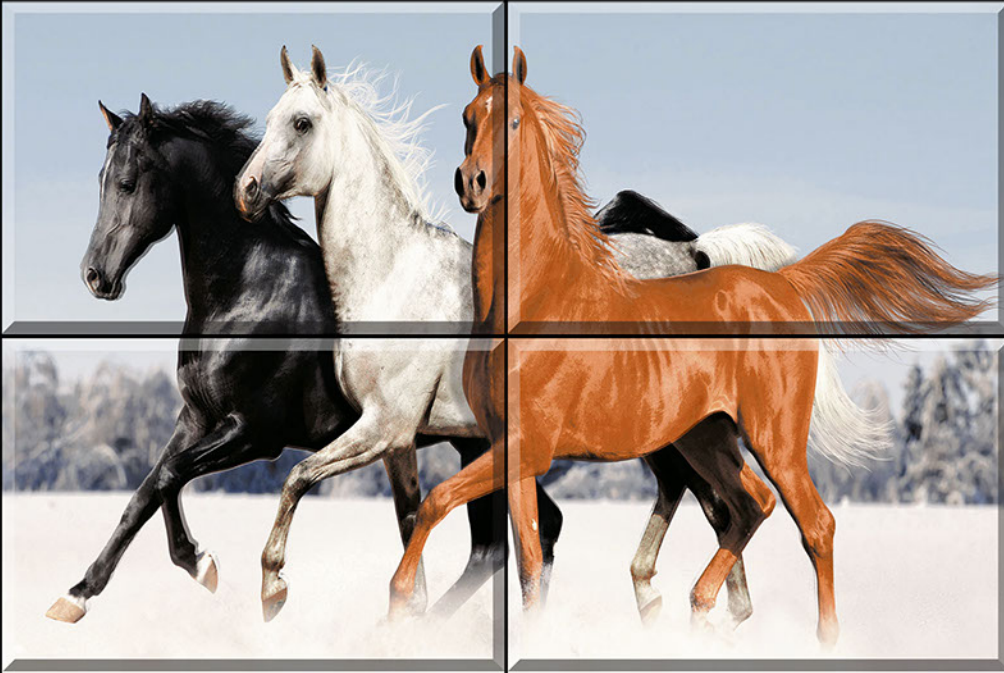


POSTER_1(4 pcs.)

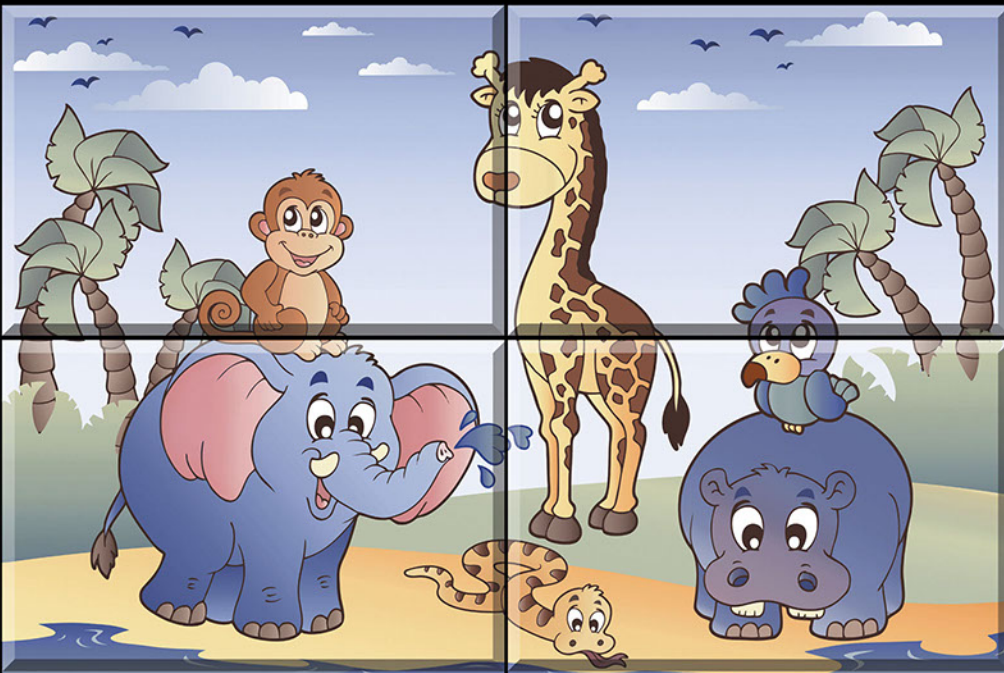


POSTER_2(4 pcs.)

G
L
O
S
S
Y



POSTER_3(4 pcs.)



POSTER_4(4 pcs.)

G
L
O
S
S
Y



POSTER_5(4 pcs.)



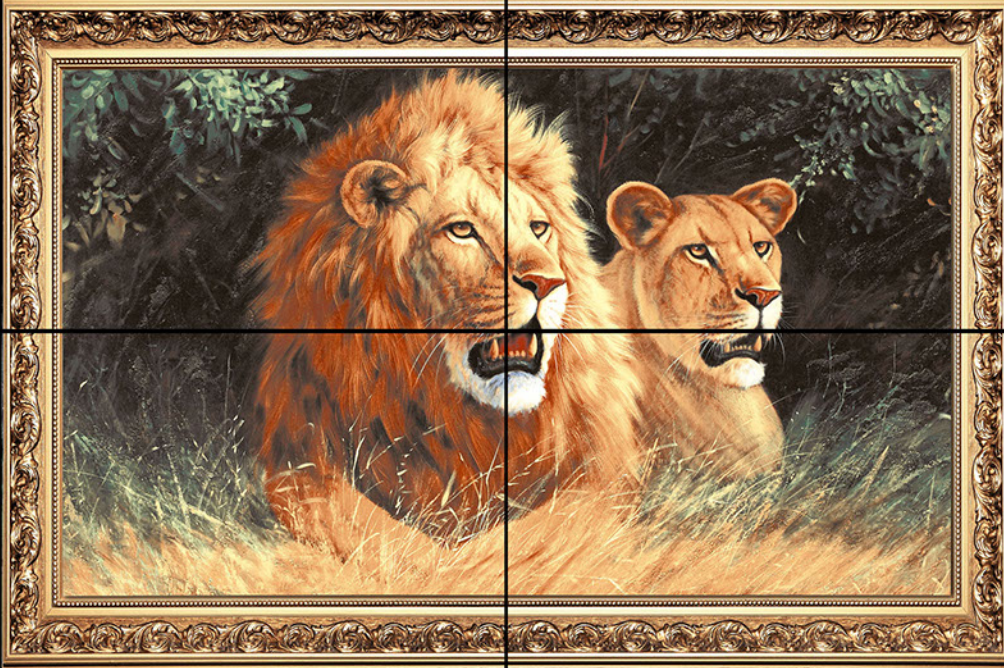
POSTER_6(4 pcs.)



POSTER_7(4 pcs.)

G
L
O
S
S
Y

G
L
O
S
S
Y



POSTER_51(4 pcs.)



POSTER_52(4 pcs.)

G
L
O
S
S
Y



POSTER_53(4 pcs.)



POSTER_54(4 pcs.)

G
L
O
S
S
Y



POSTER_55(4 pcs.)

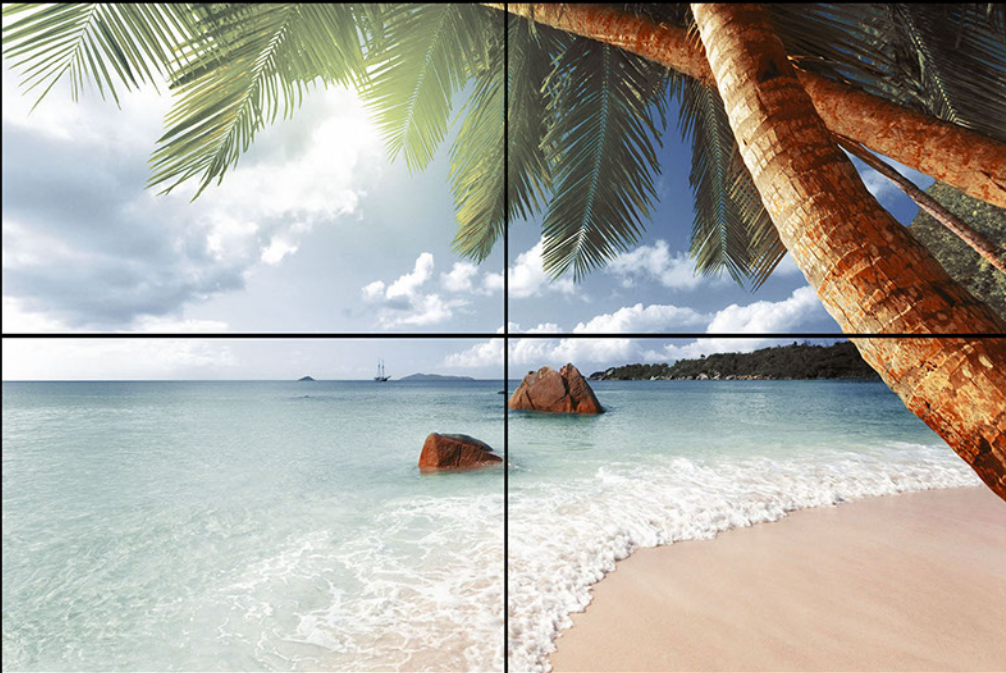


POSTER_56(4 pcs.)

G
L
O
S
S
Y



POSTER_57(4 pcs.)



POSTER_58(4 pcs.)

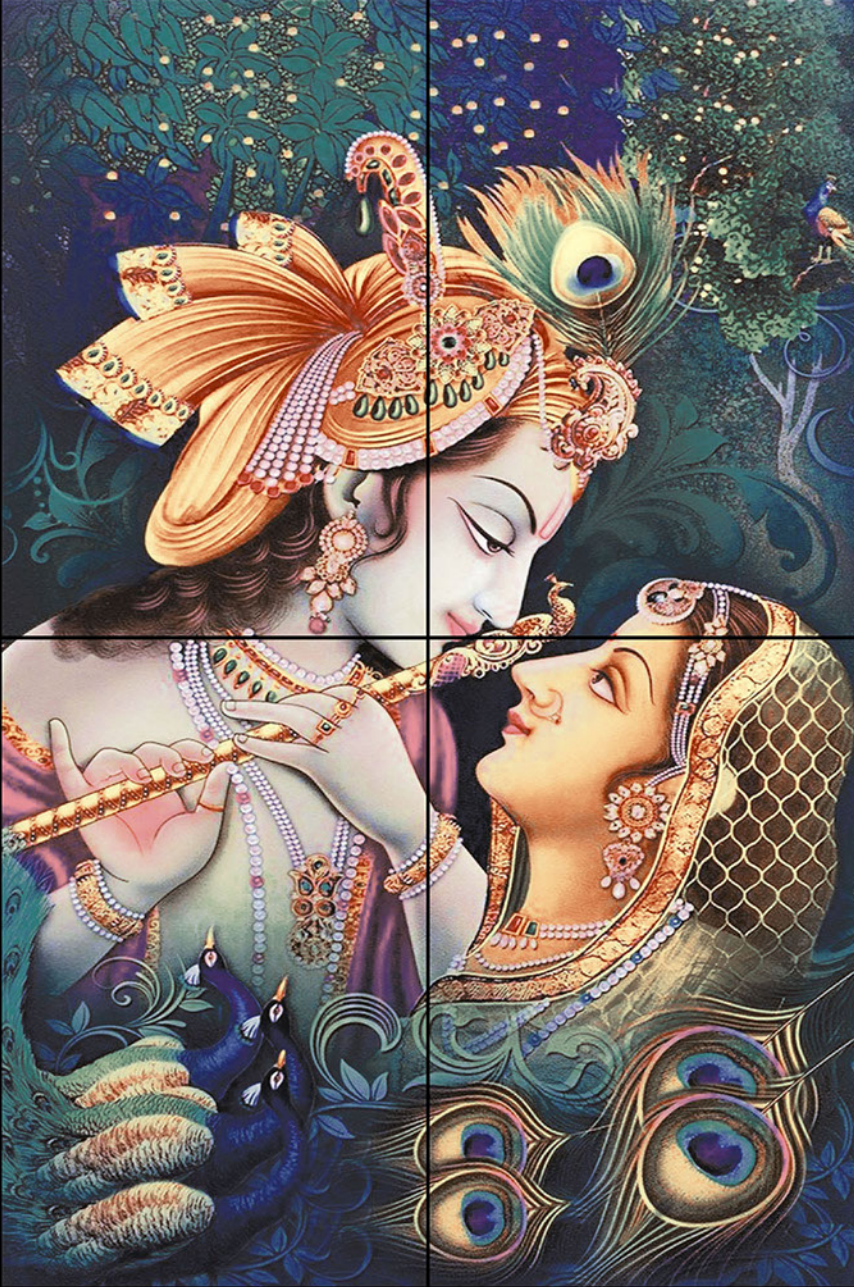
G
L
O
S
S
Y



POSTER_59(4 pcs.)



POSTER_60(4 pcs.)



POSTER_61(4 pcs.)

G
L
O
S
S
Y



POSTER_62(4 pcs.)

G
L
O
S
S
Y

G
L
O
S
S
Y



POSTER_63(4 pcs.)

G
L
O
S
S
Y



POSTER_64(6 pcs.)

G
L
O
S
S
Y



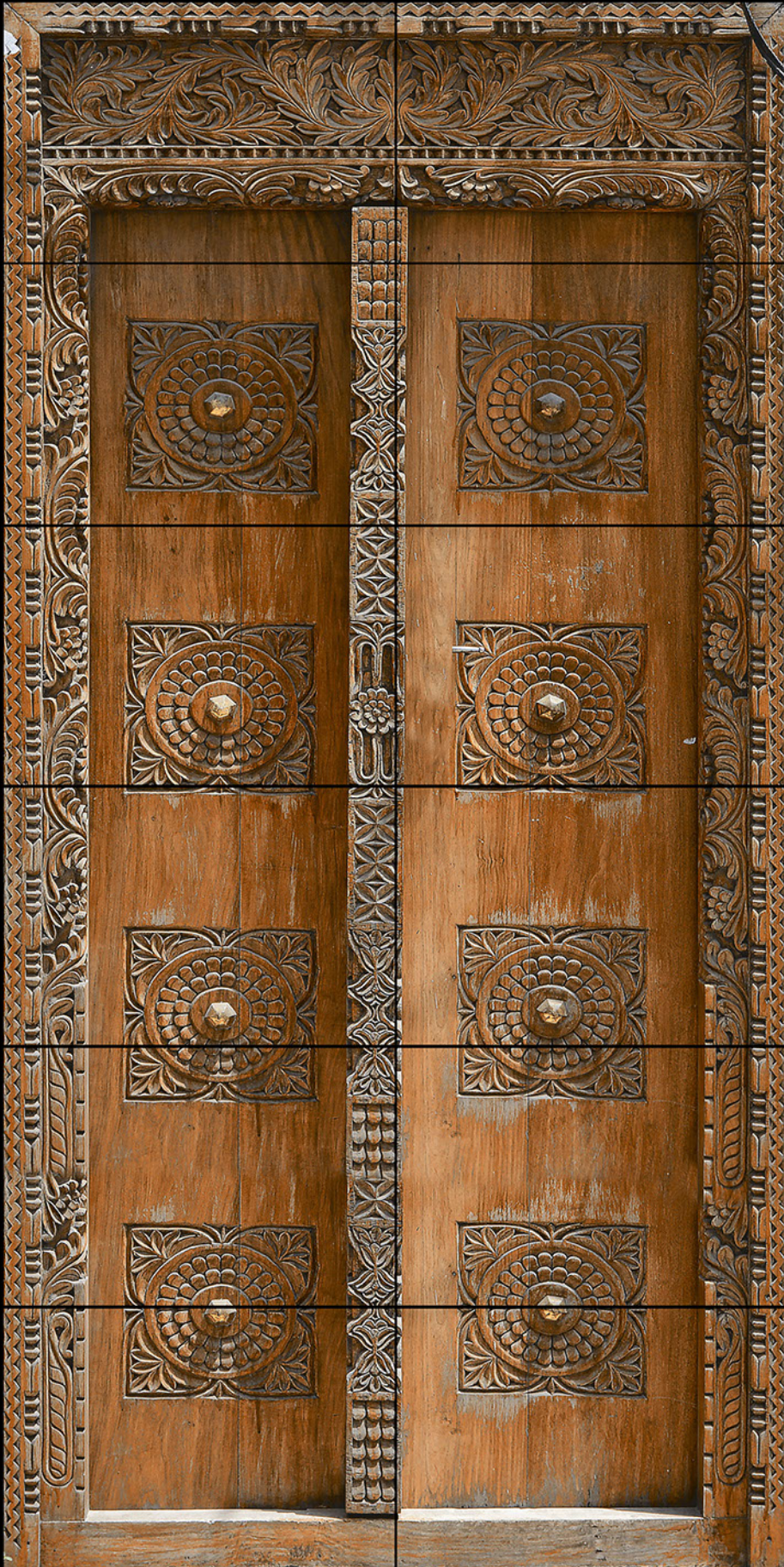
POSTER_65(6 pcs.)

G
L
O
S
S
Y



POSTER_66 (12 pcs.)

G
L
O
S
S
Y



POSTER_67 (12 pcs.)

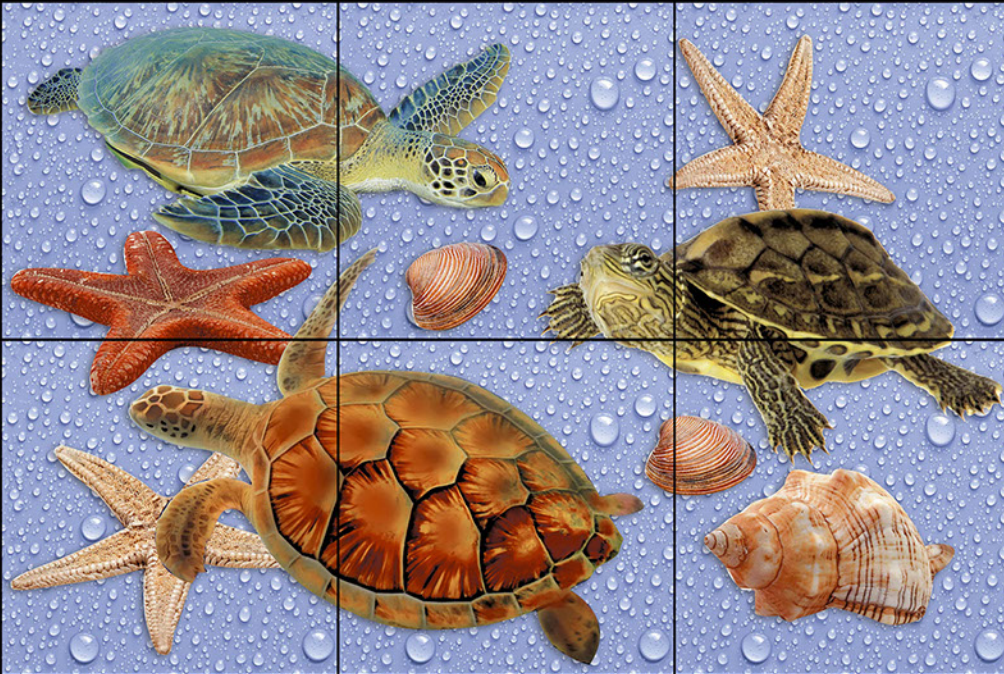
12x12 MATT FLOOR POSTER



Preview of Tile Poster-27



POSTER_21_F



POSTER_21 (6 pcs.)



POSTER_22 (6 pcs.)

M
A
T
T



POSTER_23_F



POSTER_23 (6 pcs.)

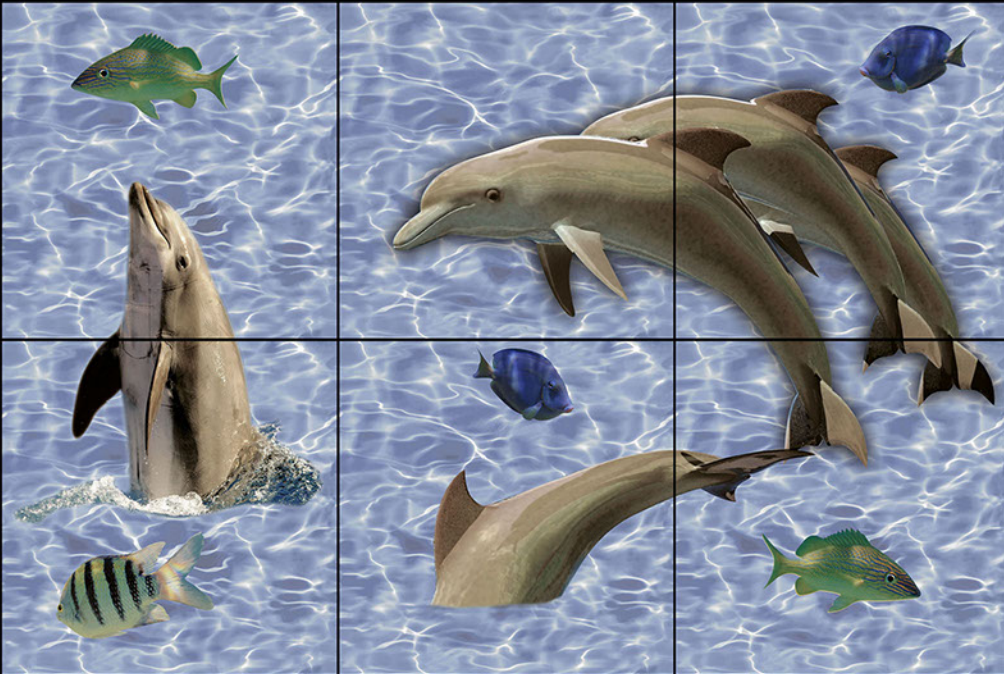


POSTER_24 (6 pcs.)

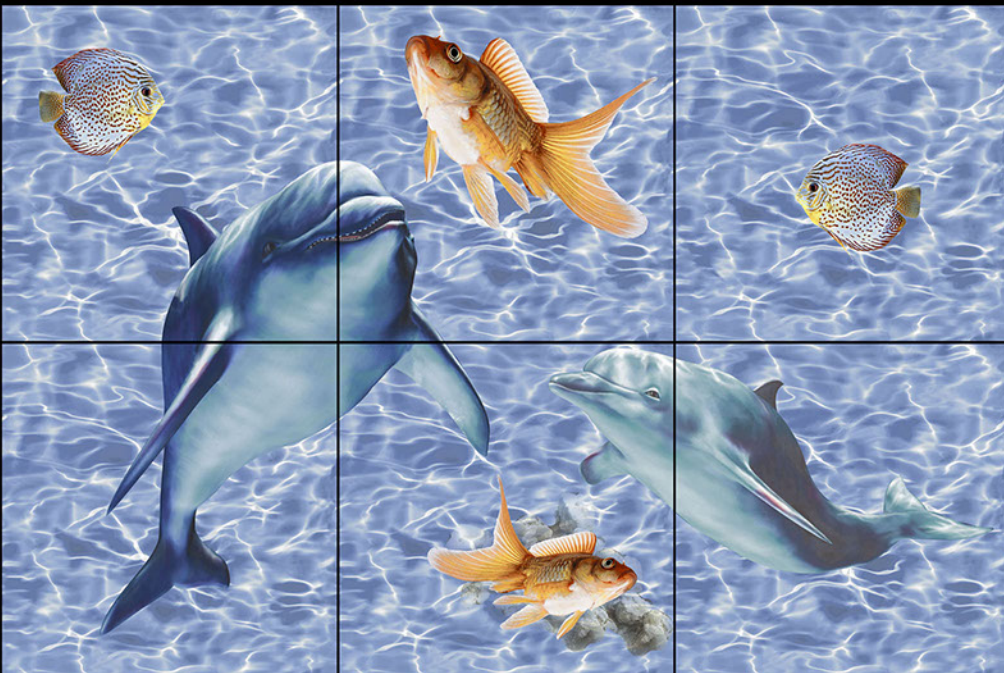
M
A
T
T



POSTER_25_F

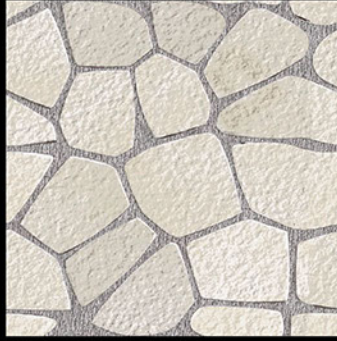


POSTER_25 (6 pcs.)



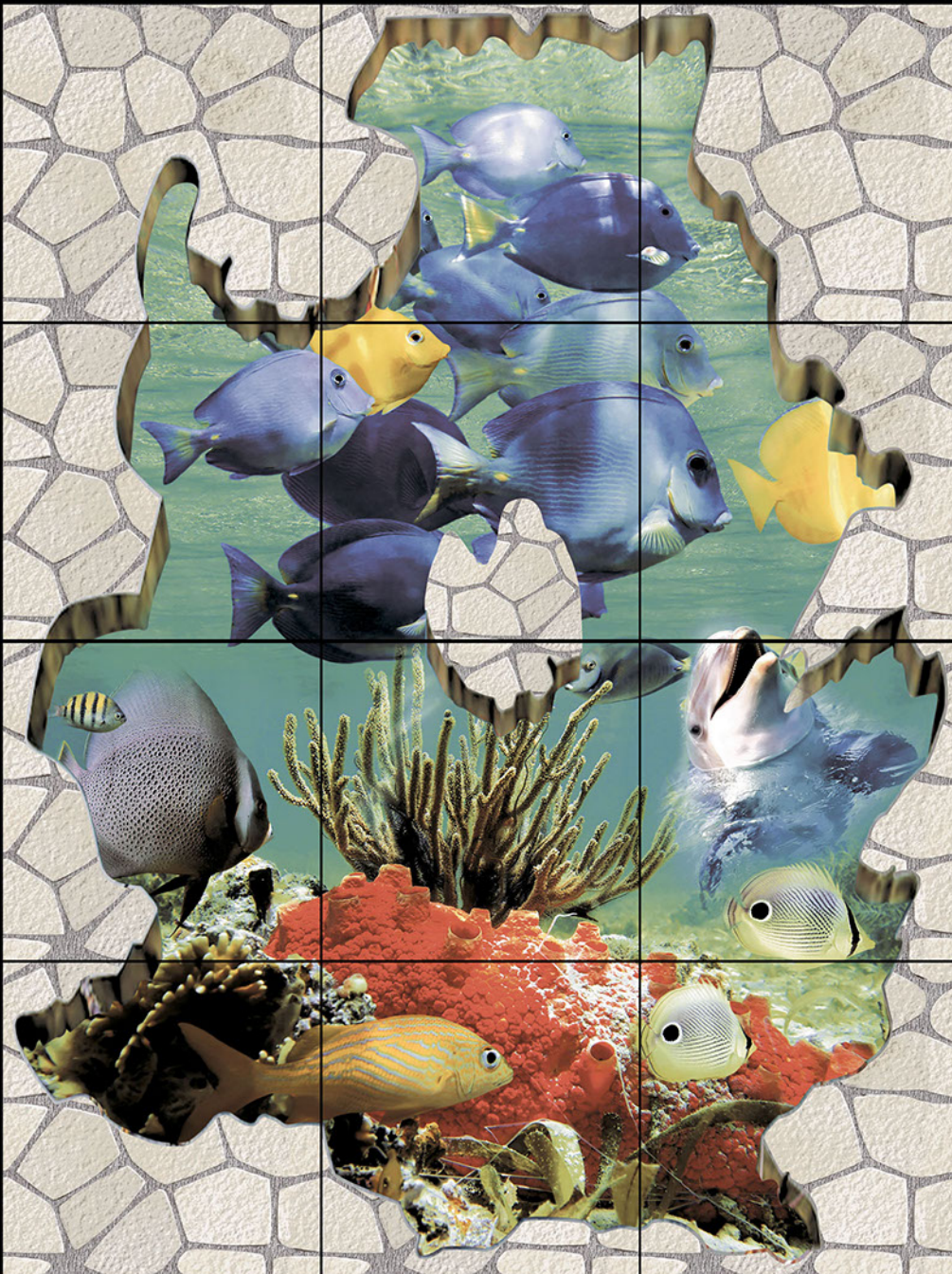
POSTER_26 (6 pcs.)

M
A
T
T

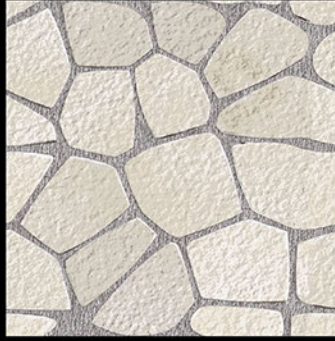


POSTER_27_F

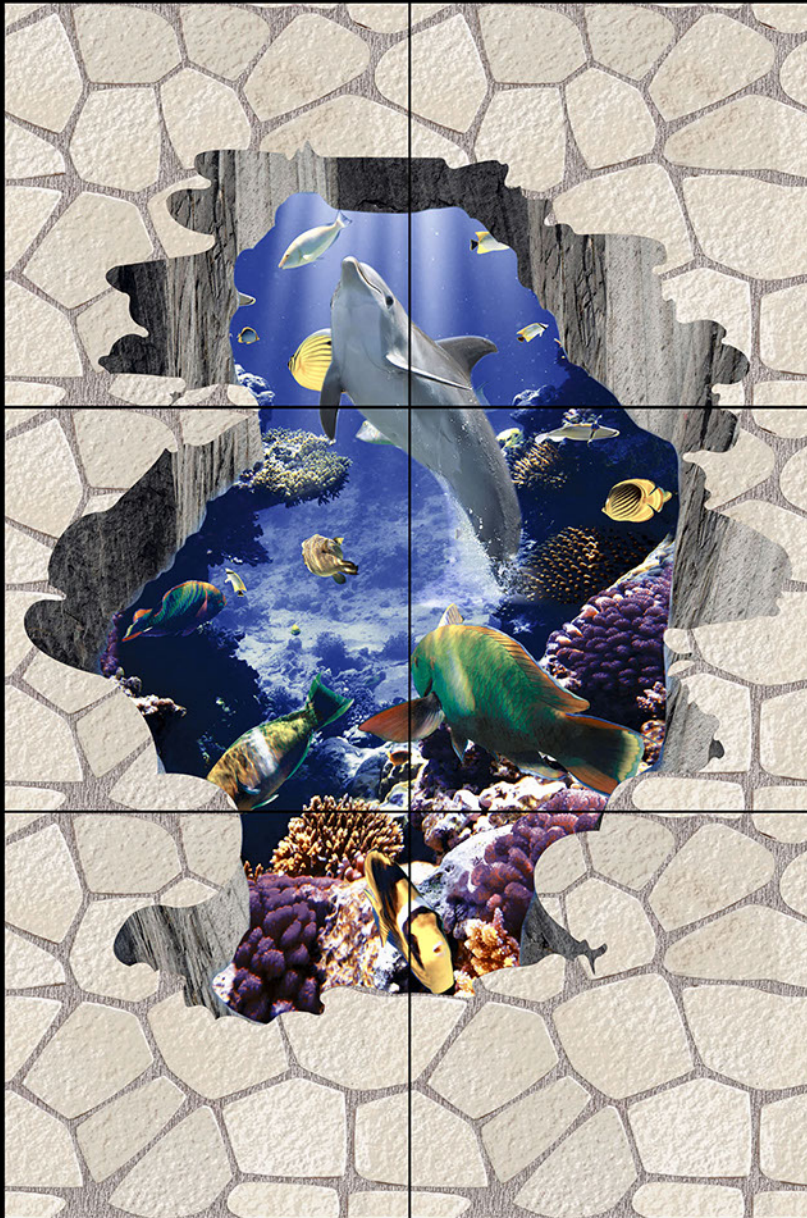
M
A
T
T



POSTER_27 (12 pcs.)

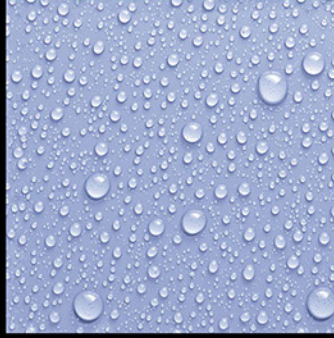


POSTER_27_F



POSTER_28 (6 pcs.)

M
A
T
T



POSTER_21_F



POSTER_29 (6 pcs.)

M
A
T
T



POSTER_23_F



POSTER_30 (6 pcs.)

M
A
T
T



POSTER_21_F

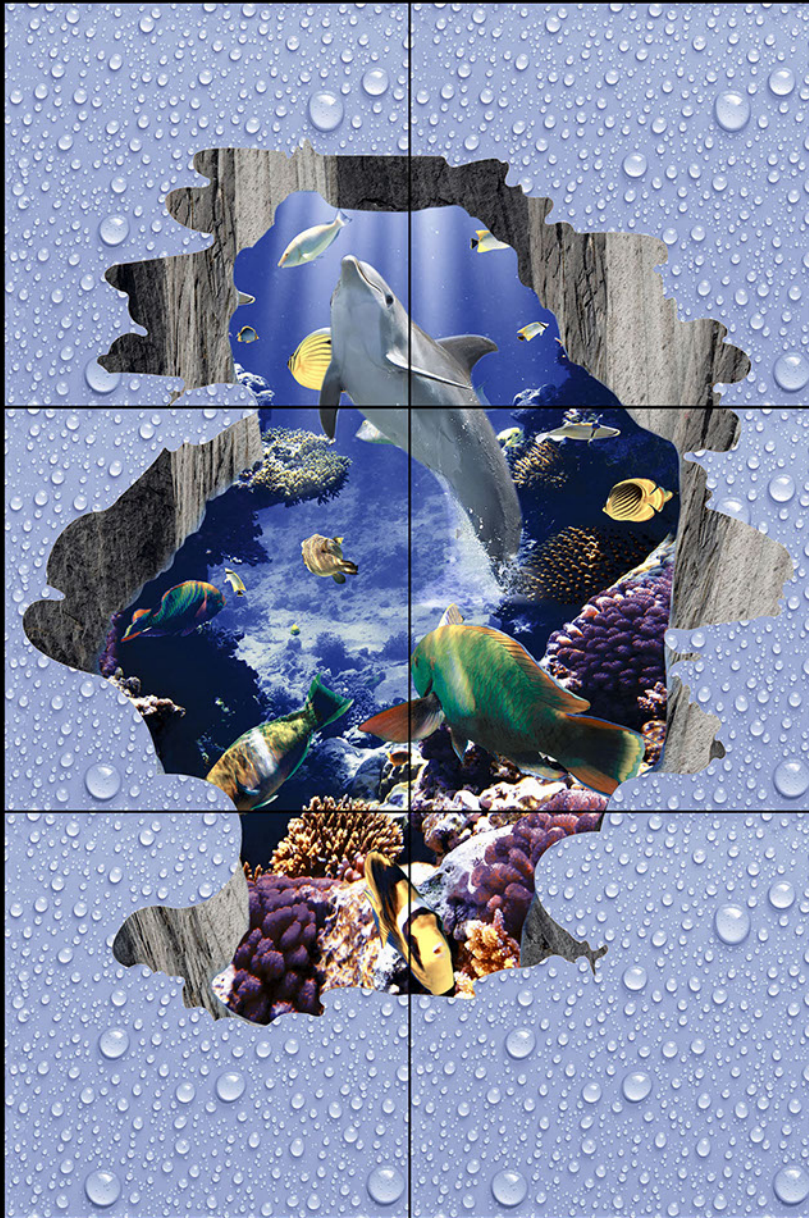


POSTER_31 (6 pcs.)

M
A
T
T



POSTER_21_F

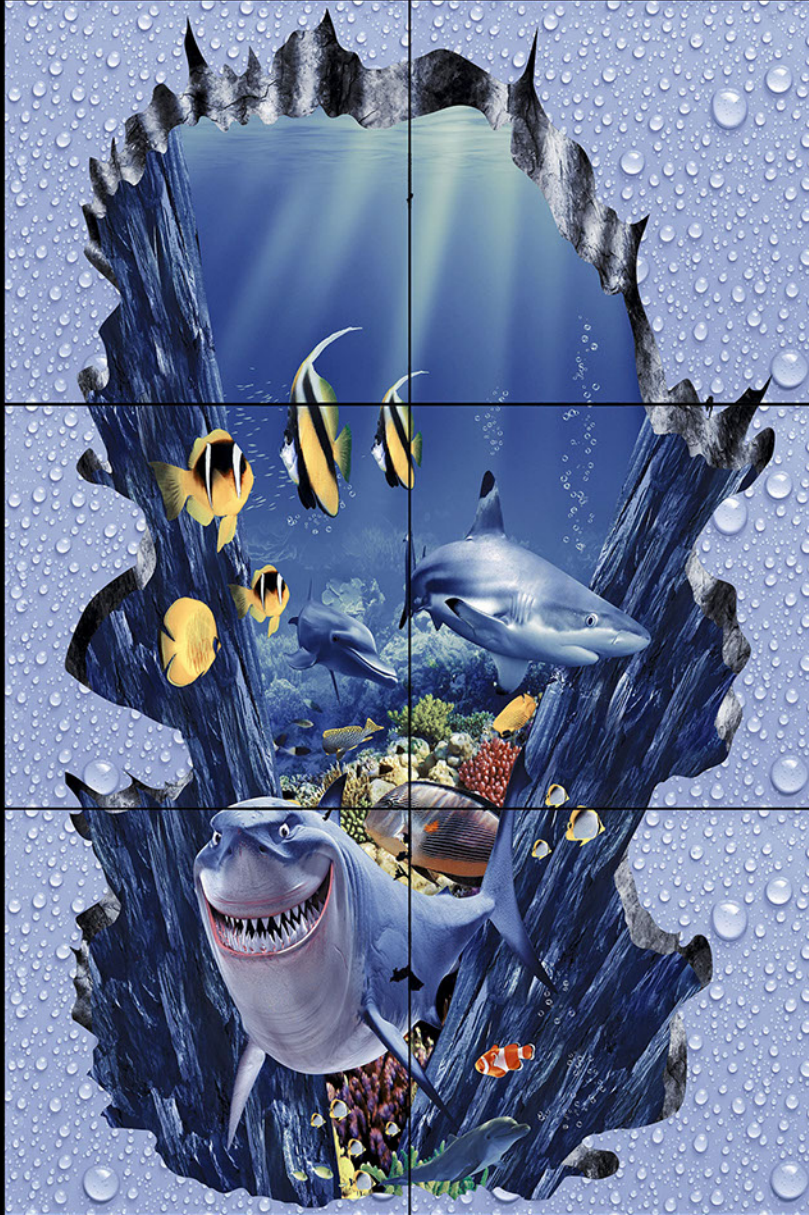


POSTER_32 (6 pcs.)

M
A
T
T



POSTER_21_F



POSTER_33 (6 pcs.)

M
A
T
T

TILES LAYING INSTRUCTION



Wall requirement

The wall should be strong and flat, surface should be smooth, the wall should be waxed/primed. Wall should be clean and dry, if the tiling has to be done on plywood the surface of wall should be sealed with 50% volume mixture of PVA and water.



Tiles Preparation

Mix the tiles from different cartoons which will help in finding blending of shades.



Tiles laying

Firstly, apply the high quality ceramic adhesive on the wall and place the first tile on the corner. Apply even pressure on the four corners of the tile to ensure sticking. Fill the area of wall that can be filled with the tiles without cutting and leave it for at least 12 hours. Then fill the rest of the area with the measured and cut tiles.



Tamping Process

To ensure the proper contact of tiles with the wall, evenly tap the tiles with a rubber mallet.



Applying Grout

On the next day, the grouting is done. Apply the grout diagonally between the tiles using a sponge to fill the gaps between the tiles. Clean and wipe the surplus grout with a sponge.



Curve Cutting

To fit the tiles in a curved surface of a washbasin etc., measure and mark the curve on cardboard and place the cardboard on the tile to cut it.



Hole Cutting

To pass a pipe through the tile, the tile has to be cut in a specific manner. Mark the position on the tile which the pipe will occupy. Draw a straight line passing through the center of the tile. Cut the tile on the drawn line. Cut the semi-circle on each of the two halves and when these two halves are placed together will form a hole.



Window Recess Tiling and Cutting

Tile has to be cut in "L" shape for window recess. Cut a line from center to edge and then draw a right angle line vertically down. Cut the line to get an "L" shape that can fit in a window.



Accessory Tile Fitting

While laying the normal tiles, keep an empty space where accessory tiles will be fitted. Apply the adhesive on

UTILITY OF WALL TILES



Multiplex



Industry



Hotel



Religion Place



School



Bank



Airport



Home



Gymnasium



Hospital



Super Market



Dance Mall

Technical Specification

| Characteristics | International Standard | Our VALUE |
|---------------------------------|------------------------------------|--|
| 1. Deviations in Length & Width | ±0.2% | ±0.08% |
| 2. Deviations in Thickness | ±4.00% | ±3.00% |
| 3. Straightness of Side | N.A. | N.A. |
| 4. Rectengularity | ±0.15% | ±0.08% |
| 5. Surface Quality | Min 95% | Min 95% |
| Physical Properties | | |
| 1. Water Absorption | ≥10% | 14-17% |
| 2. Bending Strength | Avg. 15N/mm ² | 17N Minimum |
| 3. Scratch Hardness (Mohs) | Min 3 | Min 3 |
| 5. Surface Abrasion | N.A. | N.A. |
| 6. Crazing | 4 Cycle | 4 Cycle |
| Chemical Properties | | |
| 8. Staining Resistance | Class 1 | Passes |
| 8. Household Chemicals | Class AA | Resistance to all, except hydrofluoric acid & its compound |
| Thermal Properties | | |
| Thermal Shock | N.A. | N.A. |
| Thermal Expansion | 9x10 ⁻⁶ K ⁻¹ | Complies |

Packing Details

| Size | Thickness (Approx) | Packing / Per Box | Sq. Meter/Box | Weight/Box (Approx) |
|-----------|--------------------|-------------------|---------------|---------------------|
| 300x450mm | 8.2mm | 6 Pcs. | 0.81 | 10.8 Kg |
| 300x300mm | 8.0mm | 8 Pcs. | 0.72 | 9.7 Kg |

Export Details

| Size | Box/Pallet | Pallet/Container | Sq. Meter/Container | Box/Container |
|-----------|------------|------------------|---------------------|---------------|
| 300x450mm | 108 | 23 | 2012 | 2484 |
| 300x300mm | 108 | 23 | 2012 | 2484 |



UDAY INDUSTRIES

8-A, N.H., Opp. Lalpar, Morbi-363 642. (Guj.) INDIA.

Web.: www.udayind.com

e-mail : marketing@udayind.com

Cell : +91 99099 72245, +91 98253 23287